

Datasheet for ABIN7186437
anti-CELF1 antibody (Internal Region)[Go to Product page](#)

1 Image

Overview

Quantity:	100 µg
Target:	CELF1
Binding Specificity:	Internal Region
Reactivity:	Human
Host:	Rabbit
Clonality:	Polyclonal
Conjugate:	This CELF1 antibody is un-conjugated
Application:	Western Blotting (WB), Immunohistochemistry (IHC), ELISA

Product Details

Immunogen:	Synthesized peptide derived from the Internal region of Human CUG-BP1.
Isotype:	IgG
Cross-Reactivity:	Human, Mouse, Rat
Purification:	The antibody was affinity-purified from rabbit antiserum by affinity-chromatography using epitope-specific immunogen.

Target Details

Target:	CELF1
Alternative Name:	CELF1 (CELF1 Products)
Background:	50 kDa Nuclear polyadenylated RNA binding protein antibody, 50 kDa nuclear polyadenylated

Target Details

RNA-binding protein antibody, Bruno like 2 antibody, bruno like protein 2 antibody, Bruno-like protein 2 antibody, BRUNOL 2 antibody, BRUNOL2 antibody, CELF 1 antibody, CELF-1 antibody, celf1 antibody, CELF1 CUGBP, Elav like family member 1 antibody, CELF1_HUMAN antibody, CUG BP and ETR 3 like factor 1 antibody, CUG BP antibody, CUG BP1 antibody, CUG RNA binding protein antibody, CUG triplet repeat RNA binding protein 1 antibody, CUG triplet repeat RNA-binding protein 1 antibody, CUG-BP antibody, CUG-BP- and ETR-3-like factor 1 antibody, CUG-BP1 antibody, CUGBP 1 antibody, CUGBP and ETR3 like factor 1 antibody, CUGBP antibody, CUGBP Elav like family member 1 antibody, CUGBP Elav-like family member 1 antibody, CUGBP1 antibody, Cytidine uridine guanosine binding protein 1 antibody, Deadenylation factor CUG BP antibody, Deadenylation factor CUG-BP antibody, Deadenylation factor CUGBP antibody, EDEN BP antibody, EDEN BP homolog antibody, EDEN-BP antibody, EDEN-BP homolog antibody, embryo deadenylation element binding protein antibody, embryo deadenylation element binding protein homolog antibody, Embryo deadenylation element-binding protein homolog antibody, hNab 50 antibody, hNab50 antibody, NAB 50 antibody, NAB50 antibody, NAPOR antibody, Nuclear polyadenylated RNA binding protein 50 kD antibody, Nuclear polyadenylated RNA binding protein antibody, RNA binding protein BRUNOL 2 antibody, RNA binding protein BRUNOL2 antibody, RNA-binding protein BRUNOL-2 antibody

UniProt: [Q92879](#)

Pathways: [Ribonucleoprotein Complex Subunit Organization](#)

Application Details

Application Notes: WB:1:500-1:2000, IHC:1:100-1:300, ELISA:1:40000,

Restrictions: For Research Use only

Handling

Format: Liquid

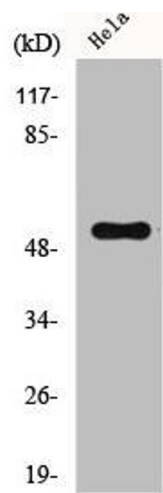
Buffer: Liquid in PBS containing 50 % glycerol, 0.5 % BSA and 0.02 % sodium azide.

Preservative: Sodium azide

Precaution of Use: This product contains Sodium azide: a POISONOUS AND HAZARDOUS SUBSTANCE which should be handled by trained staff only.

Storage: -20 °C,-80 °C

Storage Comment: Upon receipt, store at -20°C or -80°C. Avoid repeated freeze.



Western Blotting

Image 1. Western Blot analysis of HepG2 cells using CUG-BP1 Polyclonal Antibody