



[Go to Product page](#)

Datasheet for ABIN7186474

## anti-CYP2S1 antibody (Internal Region)

### 1 Image

#### Overview

Quantity:	100 µg
Target:	CYP2S1
Binding Specificity:	Internal Region
Reactivity:	Human
Host:	Rabbit
Clonality:	Polyclonal
Conjugate:	This CYP2S1 antibody is un-conjugated
Application:	Western Blotting (WB), Immunohistochemistry (IHC), ELISA, Immunofluorescence (IF)

#### Product Details

Immunogen:	Synthesized peptide derived from the Internal region of Human CYP2S1.
Isotype:	IgG
Cross-Reactivity:	Human, Mouse
Purification:	The antibody was affinity-purified from rabbit antiserum by affinity-chromatography using epitope-specific immunogen.

#### Target Details

Target:	CYP2S1
Alternative Name:	CYP2S1 ( <a href="#">CYP2S1 Products</a> )
Background:	CP2S1_HUMAN antibody, CYP2S1 antibody, CYP11S1 antibody, Cytochrome P450 2S1 antibody,

## Target Details

cytochrome P450, family 2, subfamily S, polypeptide 1 antibody

UniProt: [Q96SQ9](#)

## Application Details

Application Notes: WB:1:500-1:2000, IHC:1:100-1:300, IF:1:200-1:1000, ELISA:1:5000,

Restrictions: For Research Use only

## Handling

Format: Liquid

Buffer: Liquid in PBS containing 50 % glycerol, 0.5 % BSA and 0.02 % sodium azide.

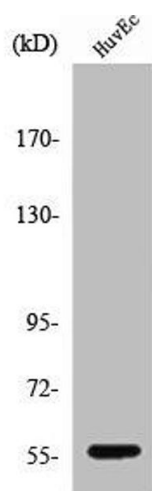
Preservative: Sodium azide

Precaution of Use: This product contains Sodium azide: a POISONOUS AND HAZARDOUS SUBSTANCE which should be handled by trained staff only.

Storage: -20 °C,-80 °C

Storage Comment: Upon receipt, store at -20°C or -80°C. Avoid repeated freeze.

## Images



### Western Blotting

**Image 1.** Western Blot analysis of COLO205 cells using CYP2S1 Polyclonal Antibody