

Datasheet for ABIN7186518
anti-DCC antibody (Internal Region)[Go to Product page](#)

1 Image

Overview

Quantity:	100 µg
Target:	DCC
Binding Specificity:	Internal Region
Reactivity:	Human
Host:	Rabbit
Clonality:	Polyclonal
Conjugate:	This DCC antibody is un-conjugated
Application:	Western Blotting (WB), ELISA, Immunofluorescence (IF)

Product Details

Immunogen:	Synthesized peptide derived from the Internal region of Human DCC.
Isotype:	IgG
Cross-Reactivity:	Human, Mouse, Rat
Purification:	The antibody was affinity-purified from rabbit antiserum by affinity-chromatography using epitope-specific immunogen.

Target Details

Target:	DCC
Alternative Name:	DCC (DCC Products)
Background:	Colorectal cancer related chromosome sequence 18 antibody, Colorectal cancer suppressor

Target Details

antibody, CRC 18 antibody, CRC18 antibody, CRCR 1 antibody, CRCR1 antibody, DCC antibody, DCC_HUMAN antibody, Deleted in colorectal cancer protein antibody, Deleted in colorectal carcinoma antibody, Immunoglobulin superfamily DCC subclass member 1 antibody, Netrin receptor DCC antibody, Tumor suppressor protein DCC antibody

UniProt: [P43146](#)

Pathways: [Regulation of Cell Size](#)

Application Details

Application Notes: WB:1:500-1:2000, IF:1:200-1:1000, ELISA:1:20000,

Restrictions: For Research Use only

Handling

Format: Liquid

Buffer: Liquid in PBS containing 50 % glycerol, 0.5 % BSA and 0.02 % sodium azide.

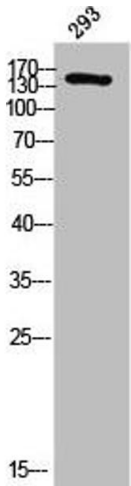
Preservative: Sodium azide

Precaution of Use: This product contains Sodium azide: a POISONOUS AND HAZARDOUS SUBSTANCE which should be handled by trained staff only.

Storage: -20 °C,-80 °C

Storage Comment: Upon receipt, store at -20°C or -80°C. Avoid repeated freeze.

Images



Western Blotting

Image 1. Western Blot analysis of 293 cells using DCC Polyclonal Antibody