

Datasheet for ABIN7186528

**anti-C-Type Lectin Domain Family 6, Member A (CLEC6A)  
(Internal Region) antibody**[Go to Product page](#)**3** Images

## Overview

Quantity:	100 µg
Target:	C-Type Lectin Domain Family 6, Member A (CLEC6A)
Binding Specificity:	Internal Region
Reactivity:	Human
Host:	Rabbit
Clonality:	Polyclonal
Conjugate:	Un-conjugated
Application:	Western Blotting (WB), ELISA, Immunohistochemistry (IHC)

## Product Details

Immunogen:	Synthesized peptide derived from the Internal region of Human Dectin-2.
Isotype:	IgG
Cross-Reactivity:	Human
Purification:	The antibody was affinity-purified from rabbit antiserum by affinity-chromatography using epitope-specific immunogen.

## Target Details

Target:	C-Type Lectin Domain Family 6, Member A (CLEC6A)
Alternative Name:	CLEC6A ( <a href="#">CLEC6A Products</a> )
Background:	C type lectin domain family 6 member A antibody, C type lectin superfamily member 10

## Target Details

antibody, C-type (calcium dependent, carbohydrate-recognition domain) lectin, superfamily member 10 antibody, C-type lectin domain family 6 member A antibody, C-type lectin superfamily member 10 antibody, CLC6A\_HUMAN antibody, CLEC4N antibody, CLEC4N, mouse, homolog of antibody, Clec6a antibody, CLECSF10 antibody, DC associated C type lectin 2 antibody, DC-associated C-type lectin 2 antibody, Dectin-2 antibody, Dectin2 antibody, Dendritic cell associated lectin 2 antibody, Dendritic cell-associated C-type lectin 2 antibody

UniProt: [Q6EIG7](#)

## Application Details

Application Notes: WB:1:500-1:2000, IHC:1:100-1:300, ELISA:1:10000,

Restrictions: For Research Use only

## Handling

Format: Liquid

Buffer: Liquid in PBS containing 50 % glycerol, 0.5 % BSA and 0.02 % sodium azide.

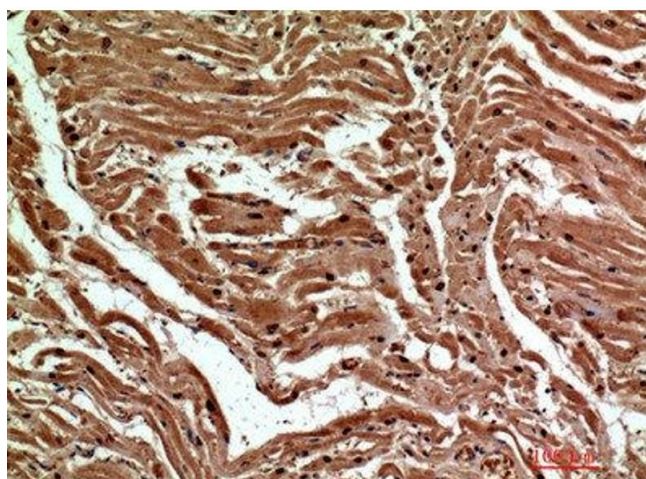
Preservative: Sodium azide

Precaution of Use: This product contains Sodium azide: a POISONOUS AND HAZARDOUS SUBSTANCE which should be handled by trained staff only.

Storage: -20 °C,-80 °C

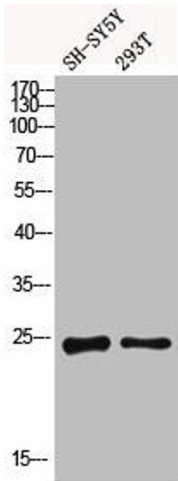
Storage Comment: Upon receipt, store at -20°C or -80°C. Avoid repeated freeze.

## Images



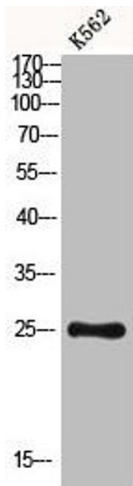
### Immunohistochemistry

**Image 1.** Immunohistochemical analysis of paraffin-embedded human-heart, antibody was diluted at 1:200



#### Western Blotting

**Image 2.** Western blot analysis of SH-SY5Y 293T using Dectin-2 antibody. Antibody was diluted at 1:1000. Secondary antibody was diluted at 1:20000



#### Western Blotting

**Image 3.** Western blot analysis of K562 using Dectin-2 antibody. Antibody was diluted at 1:1000. Secondary antibody was diluted at 1:20000