

Datasheet for ABIN7186559
anti-CDK2AP1 antibody (Internal Region)[Go to Product page](#)

1 Image

Overview

| | |
|----------------------|--|
| Quantity: | 100 µg |
| Target: | CDK2AP1 |
| Binding Specificity: | Internal Region |
| Reactivity: | Human |
| Host: | Rabbit |
| Clonality: | Polyclonal |
| Conjugate: | This CDK2AP1 antibody is un-conjugated |
| Application: | Western Blotting (WB), ELISA |

Product Details

| | |
|-------------------|---|
| Immunogen: | Synthesized peptide derived from the Internal region of Human DOC-1. |
| Isotype: | IgG |
| Cross-Reactivity: | Human, Mouse |
| Purification: | The antibody was affinity-purified from rabbit antiserum by affinity-chromatography using epitope-specific immunogen. |

Target Details

| | |
|-------------------|---|
| Target: | CDK2AP1 |
| Alternative Name: | CDK2AP1 (CDK2AP1 Products) |
| Background: | CDK2 A1 antibody, CDK2 associated protein 1 antibody, CDK2-associated protein 1 antibody, |

Target Details

CDK2AP1 antibody, CDKA1 antibody, CDKA1_HUMAN antibody, Cyclin dependent kinase 2 associated protein 1 antibody, Cyclin-dependent kinase 2-associated protein 1 antibody, Deleted in oral cancer 1 antibody, DOC 1 antibody, DOC 1 related protein antibody, DOC 1R antibody, DOC-1 antibody, DOC1 antibody, DOC1R antibody, DORC1 antibody, p12DOC 1 antibody, Putative oral cancer suppressor antibody, ST19 antibody

UniProt: [O14519](#)

Application Details

Application Notes: WB:1:500-1:2000, ELISA:1:5000,

Restrictions: For Research Use only

Handling

Format: Liquid

Buffer: Liquid in PBS containing 50 % glycerol, 0.5 % BSA and 0.02 % sodium azide.

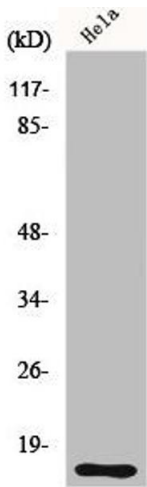
Preservative: Sodium azide

Precaution of Use: This product contains Sodium azide: a POISONOUS AND HAZARDOUS SUBSTANCE which should be handled by trained staff only.

Storage: -20 °C,-80 °C

Storage Comment: Upon receipt, store at -20°C or -80°C. Avoid repeated freeze.

Images



Western Blotting

Image 1. Western Blot analysis of HeLa cells using DOC-1 Polyclonal Antibody