

Datasheet for ABIN7186567

anti-DPYD antibody (Internal Region)[Go to Product page](#)**1** Image

Overview

Quantity:	100 µg
Target:	DPYD
Binding Specificity:	Internal Region
Reactivity:	Human
Host:	Rabbit
Clonality:	Polyclonal
Conjugate:	This DPYD antibody is un-conjugated
Application:	Western Blotting (WB), ELISA

Product Details

Immunogen:	Synthesized peptide derived from the Internal region of Human DPYD.
Isotype:	IgG
Cross-Reactivity:	Human, Mouse, Rat
Purification:	The antibody was affinity-purified from rabbit antiserum by affinity-chromatography using epitope-specific immunogen.

Target Details

Target:	DPYD
Alternative Name:	DPYD (DPYD Products)
Background:	DHP antibody, DHPDHase antibody, Dihydropyrimidine dehydrogenase [NADP(+)] antibody,

Target Details

Dihydropyrimidine dehydrogenase [NADP+] antibody, Dihydropyrimidine dehydrogenase antibody, Dihydrothymine dehydrogenase antibody, Dihydrouracil dehydrogenase antibody, DPD antibody, DPYD antibody, DPYD_HUMAN antibody, MGC132008 antibody, MGC70799 antibody, OTTHUMP00000058954 antibody

UniProt: [Q12882](#)

Pathways: [Ribonucleoside Biosynthetic Process](#)

Application Details

Application Notes: WB:1:500-1:2000, ELISA:1:20000,

Restrictions: For Research Use only

Handling

Format: Liquid

Buffer: Liquid in PBS containing 50 % glycerol, 0.5 % BSA and 0.02 % sodium azide.

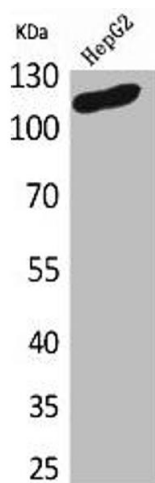
Preservative: Sodium azide

Precaution of Use: This product contains Sodium azide: a POISONOUS AND HAZARDOUS SUBSTANCE which should be handled by trained staff only.

Storage: -20 °C,-80 °C

Storage Comment: Upon receipt, store at -20°C or -80°C. Avoid repeated freeze.

Images



Western Blotting

Image 1. Western Blot analysis of HepG2 cells using DPYD Polyclonal Antibody