

Datasheet for ABIN7186606
anti-EID1 antibody (Internal Region)[Go to Product page](#)

1 Image

Overview

Quantity:	100 µg
Target:	EID1
Binding Specificity:	Internal Region
Reactivity:	Human
Host:	Rabbit
Clonality:	Polyclonal
Conjugate:	This EID1 antibody is un-conjugated
Application:	ELISA, Western Blotting (WB), Immunohistochemistry (IHC), Immunofluorescence (IF)

Product Details

Immunogen:	Synthesized peptide derived from the Internal region of Human EID-1.
Isotype:	IgG
Cross-Reactivity:	Human
Purification:	The antibody was affinity-purified from rabbit antiserum by affinity-chromatography using epitope-specific immunogen.

Target Details

Target:	EID1
Alternative Name:	EID1 (EID1 Products)
Background:	21 kDa pRb associated protein antibody, 21 kDa pRb-associated protein antibody, C15orf3

Target Details

antibody, CBP antibody, Chromosome 15 open reading frame 3 antibody, CREBBP/EP300 inhibitor 1 antibody, CREBBP/EP300 inhibitory protein 1 antibody, CRI 1 antibody, CRI1 antibody, E1A like inhibitor of differentiation antibody, E1A-like inhibitor of differentiation 1 antibody, EID 1 antibody, EID-1 antibody, EID1 antibody, EID1_HUMAN antibody, EP300 interacting inhibitor of differentiation 1 antibody, EP300-interacting inhibitor of differentiation 1 antibody, IRO45620 antibody, MGC138883 antibody, MGC138884 antibody, NB4 apoptosis related protein antibody, PNAS 22 antibody, PNAS22 antibody, PTD014 antibody, Rb and p300 binding protein EID 1 antibody, Rb and p300 binding protein EID1 antibody, RBP21 antibody, Retinoblastoma protein associated protein antibody

UniProt: [Q9Y6B2](#)

Application Details

Application Notes: WB:1:500-1:2000, IHC:1:100-1:300, IF:1:200-1:1000, ELISA:1:10000,

Restrictions: For Research Use only

Handling

Format: Liquid

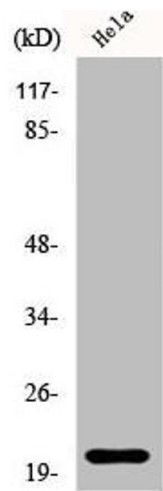
Buffer: Liquid in PBS containing 50 % glycerol, 0.5 % BSA and 0.02 % sodium azide.

Preservative: Sodium azide

Precaution of Use: This product contains Sodium azide: a POISONOUS AND HAZARDOUS SUBSTANCE which should be handled by trained staff only.

Storage: -20 °C, -80 °C

Storage Comment: Upon receipt, store at -20°C or -80°C. Avoid repeated freeze.



Western Blotting

Image 1. Western Blot analysis of HeLa cells using EID-1 Polyclonal Antibody