



Datasheet for ABIN7186633
anti-EMR4P antibody (Internal Region)



[Go to Product page](#)

2 Images

Overview

Quantity:	100 µg
Target:	EMR4P
Binding Specificity:	Internal Region
Reactivity:	Human
Host:	Rabbit
Clonality:	Polyclonal
Conjugate:	This EMR4P antibody is un-conjugated
Application:	Western Blotting (WB), Immunofluorescence (IF), ELISA

Product Details

Immunogen:	Synthesized peptide derived from the Internal region of Human EMR4.
Isotype:	IgG
Cross-Reactivity:	Human, Monkey
Purification:	The antibody was affinity-purified from rabbit antiserum by affinity-chromatography using epitope-specific immunogen.

Target Details

Target:	EMR4P
Alternative Name:	ADGRE4P (EMR4P Products)
Background:	ADGRE4P antibody, EMR4 antibody, EMR4P antibody, GPR127 antibody, PGR16Putative

Target Details

adhesion G protein-coupled receptor E4P antibody, EGF-like module receptor 4 antibody, EGF-like module-containing mucin-like hormone receptor-like 4 antibody, G-protein coupled receptor 127 antibody, G-protein coupled receptor PGR16 antibody

UniProt: [Q86SQ3](#)

Application Details

Application Notes: WB:1:500-1:2000, IF:1:200-1:1000, ELISA:1:20000,

Restrictions: For Research Use only

Handling

Format: Liquid

Buffer: Liquid in PBS containing 50 % glycerol, 0.5 % BSA and 0.02 % sodium azide.

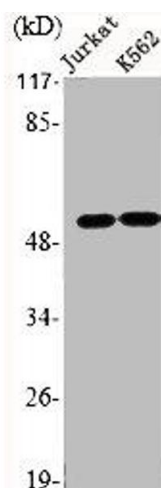
Preservative: Sodium azide

Precaution of Use: This product contains Sodium azide: a POISONOUS AND HAZARDOUS SUBSTANCE which should be handled by trained staff only.

Storage: -20 °C,-80 °C

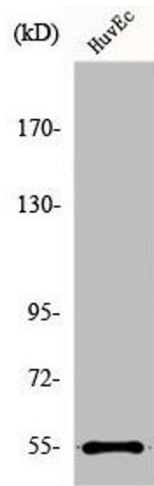
Storage Comment: Upon receipt, store at -20°C or -80°C. Avoid repeated freeze.

Images



Western Blotting

Image 1. Western Blot analysis of Jurkat K562 cells using EMR4 Polyclonal Antibody



Western Blotting

Image 2. Western Blot analysis of COLO205 cells using EMR4 Polyclonal Antibody