



[Go to Product page](#)

Datasheet for ABIN7186657

## anti-Ephrin A1 antibody (Internal Region)

### 2 Images

#### Overview

Quantity:	100 µg
Target:	Ephrin A1 (EFNA1)
Binding Specificity:	Internal Region
Reactivity:	Human
Host:	Rabbit
Clonality:	Polyclonal
Conjugate:	This Ephrin A1 antibody is un-conjugated
Application:	ELISA, Western Blotting (WB), Immunohistochemistry (IHC), Immunofluorescence (IF)

#### Product Details

Immunogen:	Synthesized peptide derived from the Internal region of Human Ephrin-A1.
Isotype:	IgG
Cross-Reactivity:	Human, Mouse, Rat
Purification:	The antibody was affinity-purified from rabbit antiserum by affinity-chromatography using epitope-specific immunogen.

#### Target Details

Target:	Ephrin A1 (EFNA1)
Alternative Name:	EFNA1 ( <a href="#">EFNA1 Products</a> )
Background:	B61 antibody, ECKLG antibody, EFL 1 antibody, EFL1 antibody, EFNA 1 antibody, Efna1

## Target Details

---

antibody, EFNA1\_HUMAN antibody, EPH related receptor tyrosine kinase ligand 1 antibody, EPH-related receptor tyrosine kinase ligand 1 antibody, Ephrin-A1 antibody, Ephrin-A1, secreted form antibody, EphrinA1 antibody, EPLG 1 antibody, EPLG1 antibody, Immediate early response protein B61 antibody, LERK 1 antibody, LERK-1 antibody, LERK1 antibody, Ligand of eph related kinase 1 antibody, OTTHUMP00000033242 antibody, OTTHUMP00000033271 antibody, secreted form antibody, TNF alpha-induced protein 4 antibody, TNFAIP 4 antibody, TNFAIP4 antibody, Tumor necrosis factor alpha induced protein 4 antibody, Tumor necrosis factor alpha-induced protein 4 antibody

UniProt: [P20827](#)

Pathways: [RTK Signaling](#)

## Application Details

---

Application Notes: WB:1:500-1:2000, IHC:1:100-1:300, IF:1:200-1:1000, ELISA:1:10000,

Restrictions: For Research Use only

## Handling

---

Format: Liquid

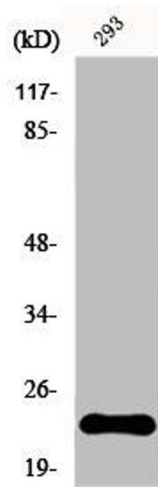
Buffer: Liquid in PBS containing 50 % glycerol, 0.5 % BSA and 0.02 % sodium azide.

Preservative: Sodium azide

Precaution of Use: This product contains Sodium azide: a POISONOUS AND HAZARDOUS SUBSTANCE which should be handled by trained staff only.

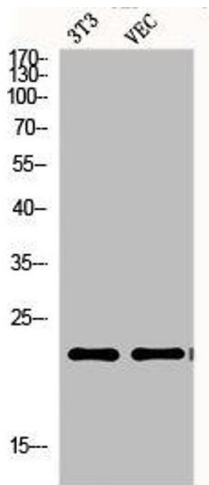
Storage: -20 °C,-80 °C

Storage Comment: Upon receipt, store at -20°C or -80°C. Avoid repeated freeze.



#### Western Blotting

**Image 1.** Western Blot analysis of 293 cells using Ephrin-A1 Polyclonal Antibody



#### Western Blotting

**Image 2.** Western Blot analysis of NIH-3T3 VEC cells using Ephrin-A1 Polyclonal Antibody