



[Go to Product page](#)

Datasheet for ABIN7186659

anti-Epigen antibody (Internal Region)

2 Images

Overview

Quantity:	100 µg
Target:	Epigen (EPGN)
Binding Specificity:	Internal Region
Reactivity:	Human
Host:	Rabbit
Clonality:	Polyclonal
Conjugate:	This Epigen antibody is un-conjugated
Application:	Western Blotting (WB), ELISA

Product Details

Immunogen:	Synthesized peptide derived from the Internal region of Human Epigen.
Isotype:	IgG
Cross-Reactivity:	Human
Purification:	The antibody was affinity-purified from rabbit antiserum by affinity-chromatography using epitope-specific immunogen.

Target Details

Target:	Epigen (EPGN)
Alternative Name:	EPGN (EPGN Products)
Background:	ALGV3072 antibody, EPG antibody, EPGN antibody, EPGN_HUMAN antibody, Epigen antibody,

Target Details

Epigen precursor antibody, Epithelial mitogen antibody, PRO9904 antibody

UniProt: [Q6UW88](#)

Pathways: [RTK Signaling](#), [EGFR Signaling Pathway](#)

Application Details

Application Notes: WB:1:500-1:2000, ELISA:1:10000,

Restrictions: For Research Use only

Handling

Format: Liquid

Buffer: Liquid in PBS containing 50 % glycerol, 0.5 % BSA and 0.02 % sodium azide.

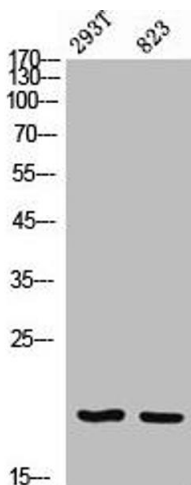
Preservative: Sodium azide

Precaution of Use: This product contains Sodium azide: a POISONOUS AND HAZARDOUS SUBSTANCE which should be handled by trained staff only.

Storage: -20 °C,-80 °C

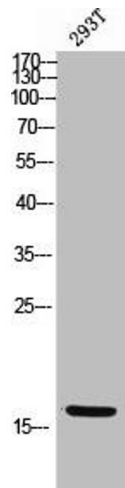
Storage Comment: Upon receipt, store at -20°C or -80°C. Avoid repeated freeze.

Images



Western Blotting

Image 1. Western Blot analysis of 293T 823 cells using Epigen Polyclonal Antibody



Western Blotting

Image 2. Western Blot analysis of 293T cells using Epigen Polyclonal Antibody