

Datasheet for ABIN7186660
anti-EPS8-Like 1 antibody (Internal Region)[Go to Product page](#)

1 Image

Overview

Quantity:	100 µg
Target:	EPS8-Like 1 (EPS8L1)
Binding Specificity:	Internal Region
Reactivity:	Human
Host:	Rabbit
Clonality:	Polyclonal
Conjugate:	This EPS8-Like 1 antibody is un-conjugated
Application:	Western Blotting (WB), ELISA, Immunohistochemistry (IHC), Immunofluorescence (IF)

Product Details

Immunogen:	Synthesized peptide derived from the Internal region of Human Eps8L1.
Isotype:	IgG
Cross-Reactivity:	Human, Mouse
Purification:	The antibody was affinity-purified from rabbit antiserum by affinity-chromatography using epitope-specific immunogen.

Target Details

Target:	EPS8-Like 1 (EPS8L1)
Alternative Name:	EPS8L1 (EPS8L1 Products)
Background:	DRC3 antibody, Epidermal growth factor receptor kinase substrate 8 like protein 1 antibody,

Target Details

Epidermal growth factor receptor kinase substrate 8-like protein 1 antibody, Epidermal growth factor receptor pathway substrate 8 related protein 1 antibody, Epidermal growth factor receptor pathway substrate 8-related protein 1 antibody, EPS8 like 1 antibody, EPS8 like protein 1 antibody, EPS8-like protein 1 antibody, EPS8-related protein 1 antibody, EPS8L 1 antibody, Eps8l1 antibody, EPS8R1 antibody, ES8L1 antibody, ES8L1_HUMAN antibody, FLJ20258 antibody, MGC23164 antibody, MGC4642 antibody, PP10566 antibody

UniProt: [Q8TE68](#)

Application Details

Application Notes: WB:1:500-1:2000, IHC:1:100-1:300, IF:1:200-1:1000, ELISA:1:20000,

Restrictions: For Research Use only

Handling

Format: Liquid

Buffer: Liquid in PBS containing 50 % glycerol, 0.5 % BSA and 0.02 % sodium azide.

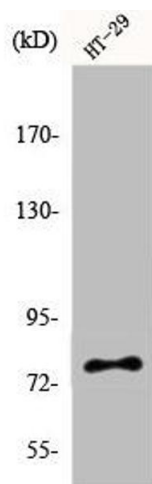
Preservative: Sodium azide

Precaution of Use: This product contains Sodium azide: a POISONOUS AND HAZARDOUS SUBSTANCE which should be handled by trained staff only.

Storage: -20 °C,-80 °C

Storage Comment: Upon receipt, store at -20°C or -80°C. Avoid repeated freeze.

Images



Western Blotting

Image 1. Western Blot analysis of HT29 cells using Eps8L1 Polyclonal Antibody