



Datasheet for ABIN7186677

## anti-Ethanolamine Kinase 2 antibody (Internal Region)



[Go to Product page](#)

### 1 Image

#### Overview

Quantity:	100 µg
Target:	Ethanolamine Kinase 2 (ETNK2)
Binding Specificity:	Internal Region
Reactivity:	Human
Host:	Rabbit
Clonality:	Polyclonal
Conjugate:	This Ethanolamine Kinase 2 antibody is un-conjugated
Application:	Western Blotting (WB), ELISA

#### Product Details

Immunogen:	Synthesized peptide derived from the Internal region of Human Ethanolamine kinase 2.
Isotype:	IgG
Cross-Reactivity:	Human, Mouse
Purification:	The antibody was affinity-purified from rabbit antiserum by affinity-chromatography using epitope-specific immunogen.

#### Target Details

Target:	Ethanolamine Kinase 2 (ETNK2)
Alternative Name:	ETNK2 ( <a href="#">ETNK2 Products</a> )
Background:	4933417N20Rik antibody, AI197444 antibody, EC 2.7.1.82 antibody, EK1 2 antibody, EK12

## Target Details

antibody, EKI2\_HUMAN antibody, Ethanolamine kinase 2 antibody, Ethanolamine kinase like protein antibody, Ethanolamine kinase-like protein antibody, ETNK 2 antibody, ETNK2 antibody, FLJ10761 antibody, HMFT1716 antibody, RP11 74C13.2 antibody, Tuc1 antibody

UniProt: [Q9NVF9](#)

## Application Details

Application Notes: WB:1:500-1:2000, ELISA:1:5000,

Restrictions: For Research Use only

## Handling

Format: Liquid

Buffer: Liquid in PBS containing 50 % glycerol, 0.5 % BSA and 0.02 % sodium azide.

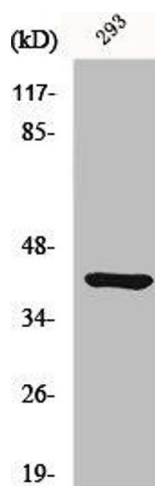
Preservative: Sodium azide

Precaution of Use: This product contains Sodium azide: a POISONOUS AND HAZARDOUS SUBSTANCE which should be handled by trained staff only.

Storage: -20 °C,-80 °C

Storage Comment: Upon receipt, store at -20°C or -80°C. Avoid repeated freeze.

## Images



### Western Blotting

**Image 1.** Western Blot analysis of 293 cells using Ethanolamine kinase 2 Polyclonal Antibody