



[Go to Product page](#)

Datasheet for ABIN7186738

anti-FOX E3 antibody (Internal Region)

1 Image

Overview

Quantity:	100 µg
Target:	FOX E3
Binding Specificity:	Internal Region
Reactivity:	Human
Host:	Rabbit
Clonality:	Polyclonal
Conjugate:	This FOX E3 antibody is un-conjugated
Application:	Western Blotting (WB), ELISA, Immunohistochemistry (IHC)

Product Details

Immunogen:	Synthesized peptide derived from the Internal region of Human FoxE3.
Isotype:	IgG
Cross-Reactivity:	Human, Mouse, Rat
Purification:	The antibody was affinity-purified from rabbit antiserum by affinity-chromatography using epitope-specific immunogen.

Target Details

Target:	FOX E3
Alternative Name:	FOX E3 (FOX E3 Products)
Background:	Drosophila Forkhead Homolog Like 12 antibody, FKHL 12 antibody, FKHL12 antibody, Forkhead

Target Details

Box E3 antibody, Forkhead box protein E3 antibody, Forkhead Related Activator 8 antibody, Forkhead related protein FKHL12 antibody, Forkhead-related protein FKHL12 antibody, Forkhead-related transcription factor 8 antibody, Foxe3 antibody, FOXE3 forkhead box E3 antibody, FOXE3_HUMAN antibody, FREAC 8 antibody, FREAC-8 antibody, FREAC8 antibody

UniProt: [Q13461](#)

Application Details

Application Notes: WB:1:500-1:2000, IHC:1:100-1:300, ELISA:1:20000,

Restrictions: For Research Use only

Handling

Format: Liquid

Buffer: Liquid in PBS containing 50 % glycerol, 0.5 % BSA and 0.02 % sodium azide.

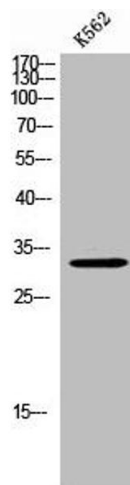
Preservative: Sodium azide

Precaution of Use: This product contains Sodium azide: a POISONOUS AND HAZARDOUS SUBSTANCE which should be handled by trained staff only.

Storage: -20 °C,-80 °C

Storage Comment: Upon receipt, store at -20°C or -80°C. Avoid repeated freeze.

Images



Western Blotting

Image 1. Western Blot analysis of K562 cells using FoxE3 Polyclonal Antibody