

Datasheet for ABIN7186776

anti-GRAP2 antibody (Internal Region)[Go to Product page](#)**2** Images

Overview

Quantity:	100 µg
Target:	GRAP2
Binding Specificity:	Internal Region
Reactivity:	Human
Host:	Rabbit
Clonality:	Polyclonal
Conjugate:	This GRAP2 antibody is un-conjugated
Application:	Western Blotting (WB), ELISA

Product Details

Immunogen:	Synthesized peptide derived from the Internal region of Human Gads.
Isotype:	IgG
Cross-Reactivity:	Human
Purification:	The antibody was affinity-purified from rabbit antiserum by affinity-chromatography using epitope-specific immunogen.

Target Details

Target:	GRAP2
Alternative Name:	GRAP2 (GRAP2 Products)
Background:	Adapter protein GRID antibody, GADS antibody, GADS protein antibody, GRAP-2 antibody, Grap2

Target Details

antibody, GRAP2_HUMAN antibody, GRB-2-like protein antibody, GRB2-related adapter protein 2 antibody, GRB2-related adaptor protein 2 antibody, GRB2-related protein with insert domain antibody, GRB2L antibody, GRBLG antibody, GRBX antibody, Grf-40 antibody, Grf40 adapter protein antibody, Grf40 antibody, GRID antibody, Growth factor receptor-binding protein antibody, Growth factor receptor-bound protein 2-related adaptor protein 2 antibody, GRPL antibody, Hema antibody, Hematopoietic cell-associated adapter protein GrpL antibody, Hematopoietic cell-associated adaptor protein GRPL antibody, Mona antibody, p38 antibody, Protein GADS antibody, SH3-SH2-SH3 adapter Mona antibody, SH3-SH2-SH3 adaptor molecule antibody

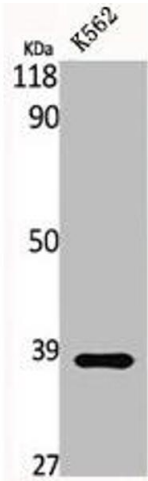
UniProt:	O75791
Pathways:	TCR Signaling , Fc-epsilon Receptor Signaling Pathway

Application Details

Application Notes:	WB:1:500-1:2000, ELISA:1:40000,
Restrictions:	For Research Use only

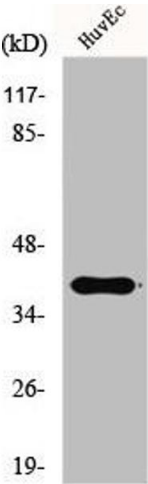
Handling

Format:	Liquid
Buffer:	Liquid in PBS containing 50 % glycerol, 0.5 % BSA and 0.02 % sodium azide.
Preservative:	Sodium azide
Precaution of Use:	This product contains Sodium azide: a POISONOUS AND HAZARDOUS SUBSTANCE which should be handled by trained staff only.
Storage:	-20 °C,-80 °C
Storage Comment:	Upon receipt, store at -20°C or -80°C. Avoid repeated freeze.



Western Blotting

Image 1. Western Blot analysis of K562 cells using Gads Polyclonal Antibody



Western Blotting

Image 2. Western Blot analysis of HuvEc cells using Gads Polyclonal Antibody