



[Go to Product page](#)

Datasheet for ABIN7186793

anti-MLZE antibody (Internal Region)

1 Image

Overview

Quantity:	100 µg
Target:	MLZE
Binding Specificity:	Internal Region
Reactivity:	Human
Host:	Rabbit
Clonality:	Polyclonal
Conjugate:	This MLZE antibody is un-conjugated
Application:	ELISA, Western Blotting (WB)

Product Details

Immunogen:	Synthesized peptide derived from the Internal region of Human Gasdermin C.
Isotype:	IgG
Cross-Reactivity:	Human
Purification:	The antibody was affinity-purified from rabbit antiserum by affinity-chromatography using epitope-specific immunogen.

Target Details

Target:	MLZE
Alternative Name:	GSDMC (MLZE Products)
Background:	Gasdermin C antibody, Gasdermin-C antibody, GSDMC antibody, GSDMC_HUMAN antibody,

Target Details

Melanoma derived leucine zipper, extra nuclear factor antibody, Melanoma-derived leucine zipper-containing extranuclear factor antibody, MLZE antibody

UniProt: [Q9BYG8](#)

Application Details

Application Notes: WB:1:500-1:2000, ELISA:1:10000,

Restrictions: For Research Use only

Handling

Format: Liquid

Buffer: Liquid in PBS containing 50 % glycerol, 0.5 % BSA and 0.02 % sodium azide.

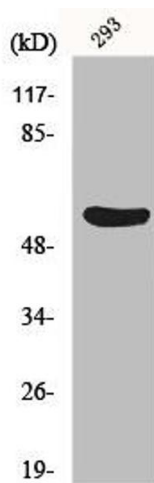
Preservative: Sodium azide

Precaution of Use: This product contains Sodium azide: a POISONOUS AND HAZARDOUS SUBSTANCE which should be handled by trained staff only.

Storage: -20 °C,-80 °C

Storage Comment: Upon receipt, store at -20°C or -80°C. Avoid repeated freeze.

Images



Western Blotting

Image 1. Western Blot analysis of 293 cells using Gasdermin C Polyclonal Antibody