

Datasheet for ABIN7186827

**anti-GIMAP4 antibody (Internal Region)**[Go to Product page](#)**1** Image

## Overview

Quantity:	100 µg
Target:	GIMAP4
Binding Specificity:	Internal Region
Reactivity:	Human
Host:	Rabbit
Clonality:	Polyclonal
Conjugate:	This GIMAP4 antibody is un-conjugated
Application:	Western Blotting (WB), ELISA, Immunohistochemistry (IHC)

## Product Details

Immunogen:	Synthesized peptide derived from the Internal region of Human GIMAP4.
Isotype:	IgG
Cross-Reactivity:	Human
Purification:	The antibody was affinity-purified from rabbit antiserum by affinity-chromatography using epitope-specific immunogen.

## Target Details

Target:	GIMAP4
Alternative Name:	GIMAP4 ( <a href="#">GIMAP4 Products</a> )
Background:	FLJ11110 antibody, GIMA4_HUMAN antibody, Gimap4 antibody, GTPase IMAP family member

Target Details

4 antibody, GTPase IMAP family member 4 antibody, hIAN1 antibody, HIMAP4 antibody, Human immune associated nucleotide 1 antibody, IAN-1 antibody, IAN1 antibody, IMAP4 antibody, Immunity associated nucleotide 1 protein antibody, Immunity associated protein 4 antibody, Immunity-associated nucleotide 1 protein antibody, Immunity-associated protein 4 antibody, MSTP062 antibody

UniProt: [Q9NUV9](#)

Application Details

Application Notes: WB:1:500-1:2000, IHC:1:100-1:300, ELISA:1:5000,

Restrictions: For Research Use only

Handling

Format: Liquid

Buffer: Liquid in PBS containing 50 % glycerol, 0.5 % BSA and 0.02 % sodium azide.

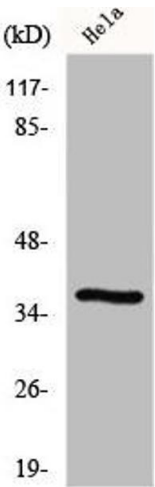
Preservative: Sodium azide

Precaution of Use: This product contains Sodium azide: a POISONOUS AND HAZARDOUS SUBSTANCE which should be handled by trained staff only.

Storage: -20 °C,-80 °C

Storage Comment: Upon receipt, store at -20°C or -80°C. Avoid repeated freeze.

Images



Western Blotting

**Image 1.** Western Blot analysis of RAW264.7 cells using GIMAP4 Polyclonal Antibody