



[Go to Product page](#)

Datasheet for ABIN7186885

anti-GPR175 antibody (Internal Region)

1 Image

Overview

Quantity:	100 µg
Target:	GPR175 (TPRA1)
Binding Specificity:	Internal Region
Reactivity:	Human
Host:	Rabbit
Clonality:	Polyclonal
Conjugate:	This GPR175 antibody is un-conjugated
Application:	Western Blotting (WB), ELISA, Immunofluorescence (IF)

Product Details

Immunogen:	Synthesized peptide derived from the Internal region of Human GPR175.
Isotype:	IgG
Cross-Reactivity:	Human, Mouse, Rat
Purification:	The antibody was affinity-purified from rabbit antiserum by affinity-chromatography using epitope-specific immunogen.

Target Details

Target:	GPR175 (TPRA1)
Alternative Name:	TPRA1 (TPRA1 Products)
Background:	FLJ32197 antibody, G protein coupled receptor 175 antibody, GPCR LOC51210 antibody,

Target Details

GPR175 antibody, Integral membrane protein GPR175 antibody, PP6566 antibody, Seven transmembrane domain orphan receptor antibody, TMEM227 antibody, Tpra1 antibody, TPRA1_HUMAN antibody, TPRA40 antibody, Transmembrane domain protein regulated in adipocytes antibody, Transmembrane domain protein regulated in adipocytes 40 kDa antibody, Transmembrane protein 227 antibody, Transmembrane protein adipocyte-associated 1 antibody

UniProt: [Q86W33](#)

Application Details

Application Notes: WB:1:500-1:2000, IF:1:200-1:1000, ELISA:1:20000,

Restrictions: For Research Use only

Handling

Format: Liquid

Buffer: Liquid in PBS containing 50 % glycerol, 0.5 % BSA and 0.02 % sodium azide.

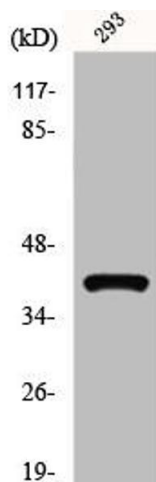
Preservative: Sodium azide

Precaution of Use: This product contains Sodium azide: a POISONOUS AND HAZARDOUS SUBSTANCE which should be handled by trained staff only.

Storage: -20 °C,-80 °C

Storage Comment: Upon receipt, store at -20°C or -80°C. Avoid repeated freeze.

Images



Western Blotting

Image 1. Western Blot analysis of 293 cells using GPR175 Polyclonal Antibody