



[Go to Product page](#)

Datasheet for ABIN7186930

## anti-GUSBP1 antibody (Internal Region)

### 1 Image

#### Overview

Quantity:	100 µg
Target:	GUSBP1
Binding Specificity:	Internal Region
Reactivity:	Human
Host:	Rabbit
Clonality:	Polyclonal
Conjugate:	This GUSBP1 antibody is un-conjugated
Application:	ELISA, Western Blotting (WB)

#### Product Details

Immunogen:	Synthesized peptide derived from the Internal region of Human GUSBP1.
Isotype:	IgG
Cross-Reactivity:	Human
Purification:	The antibody was affinity-purified from rabbit antiserum by affinity-chromatography using epitope-specific immunogen.

#### Target Details

Target:	GUSBP1
Alternative Name:	GUSBP1 ( <a href="#">GUSBP1 Products</a> )
Background:	GUSBP1 antibody, SMA3 antibody, Putative inactive beta-glucuronidase-like protein SMA3

## Target Details

antibody

UniProt: [Q15486](#)

## Application Details

Application Notes: WB:1:500-1:2000, ELISA:1:40000,

Restrictions: For Research Use only

## Handling

Format: Liquid

Buffer: Liquid in PBS containing 50 % glycerol, 0.5 % BSA and 0.02 % sodium azide.

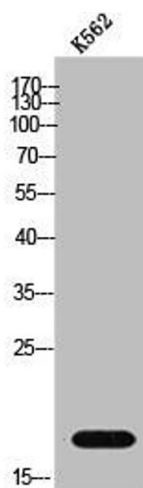
Preservative: Sodium azide

Precaution of Use: This product contains Sodium azide: a POISONOUS AND HAZARDOUS SUBSTANCE which should be handled by trained staff only.

Storage: -20 °C,-80 °C

Storage Comment: Upon receipt, store at -20°C or -80°C. Avoid repeated freeze.

## Images



### Western Blotting

**Image 1.** Western Blot analysis of K562 cells using GUSBP1 Polyclonal Antibody