

Datasheet for ABIN7186975  
**anti-HNRPLL antibody (Internal Region)**[Go to Product page](#)

## 1 Image

## Overview

Quantity:	100 µg
Target:	HNRPLL
Binding Specificity:	Internal Region
Reactivity:	Human
Host:	Rabbit
Clonality:	Polyclonal
Conjugate:	This HNRPLL antibody is un-conjugated
Application:	Western Blotting (WB), ELISA, Immunohistochemistry (IHC)

## Product Details

Immunogen:	Synthesized peptide derived from the Internal region of Human hnRNP LL.
Isotype:	IgG
Cross-Reactivity:	Human, Mouse, Rat
Purification:	The antibody was affinity-purified from rabbit antiserum by affinity-chromatography using epitope-specific immunogen.

## Target Details

Target:	HNRPLL
Alternative Name:	HNRNPLL ( <a href="#">HNRPLL Products</a> )
Background:	BLOCK24 antibody, Heterogeneous nuclear ribonucleoprotein L like antibody, Heterogeneous

## Target Details

nuclear ribonucleoprotein L-like antibody, HNRLL\_HUMAN antibody, hnRNPLL antibody, HNRPLL antibody, SRRF antibody, Stromal RNA regulating factor antibody, Stromal RNA-regulating factor antibody

UniProt: [Q8WVV9](#)

## Application Details

Application Notes: WB:1:500-1:2000, IHC:1:100-1:300, ELISA:1:20000,

Restrictions: For Research Use only

## Handling

Format: Liquid

Buffer: Liquid in PBS containing 50 % glycerol, 0.5 % BSA and 0.02 % sodium azide.

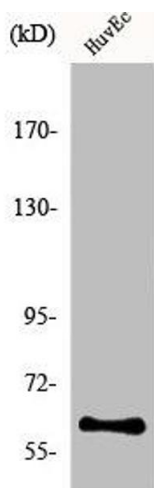
Preservative: Sodium azide

Precaution of Use: This product contains Sodium azide: a POISONOUS AND HAZARDOUS SUBSTANCE which should be handled by trained staff only.

Storage: -20 °C,-80 °C

Storage Comment: Upon receipt, store at -20°C or -80°C. Avoid repeated freeze.

## Images



### Western Blotting

**Image 1.** Western Blot analysis of COLO205 cells using hnRNP LL Polyclonal Antibody