



[Go to Product page](#)

Datasheet for ABIN7187050

## anti-IL-26 antibody (Internal Region)

### 1 Image

#### Overview

Quantity:	100 µg
Target:	IL-26 (IL26)
Binding Specificity:	Internal Region
Reactivity:	Human
Host:	Rabbit
Clonality:	Polyclonal
Conjugate:	This IL-26 antibody is un-conjugated
Application:	Western Blotting (WB), ELISA

#### Product Details

Immunogen:	Synthesized peptide derived from the Internal region of Human IL-26.
Isotype:	IgG
Cross-Reactivity:	Human
Purification:	The antibody was affinity-purified from rabbit antiserum by affinity-chromatography using epitope-specific immunogen.

#### Target Details

Target:	IL-26 (IL26)
Alternative Name:	IL26 ( <a href="#">IL26 Products</a> )
Background:	AK155 antibody, IL 26 antibody, IL-26 antibody, IL26 antibody, IL26_HUMAN antibody,

## Target Details

Interleukin 26 antibody, Interleukin-26 antibody, Protein AK155 antibody

UniProt: [Q9NPH9](#)

## Application Details

Application Notes: WB:1:500-1:2000, ELISA:1:10000,

Restrictions: For Research Use only

## Handling

Format: Liquid

Buffer: Liquid in PBS containing 50 % glycerol, 0.5 % BSA and 0.02 % sodium azide.

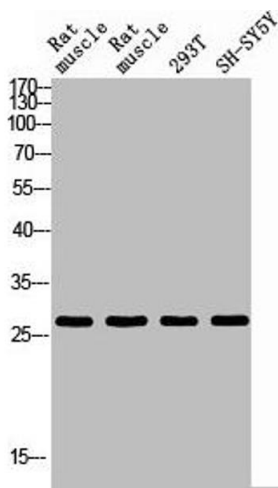
Preservative: Sodium azide

Precaution of Use: This product contains Sodium azide: a POISONOUS AND HAZARDOUS SUBSTANCE which should be handled by trained staff only.

Storage: -20 °C,-80 °C

Storage Comment: Upon receipt, store at -20°C or -80°C. Avoid repeated freeze.

## Images



### Western Blotting

**Image 1.** Western blot analysis of RAT-MUSCLE RAT-SPLEEN 293T SH-SY5Y using IL26 antibody. Antibody was diluted at 1:2000. Secondary antibody was diluted at 1:20000