



[Go to Product page](#)

Datasheet for ABIN7187102

## anti-IRX2 antibody (Internal Region)

### 1 Image

#### Overview

Quantity:	100 µg
Target:	IRX2
Binding Specificity:	Internal Region
Reactivity:	Human
Host:	Rabbit
Clonality:	Polyclonal
Conjugate:	This IRX2 antibody is un-conjugated
Application:	Western Blotting (WB), ELISA, Immunohistochemistry (IHC), Immunofluorescence (IF)

#### Product Details

Immunogen:	Synthesized peptide derived from the Internal region of Human IRX2.
Isotype:	IgG
Cross-Reactivity:	Human
Purification:	The antibody was affinity-purified from rabbit antiserum by affinity-chromatography using epitope-specific immunogen.

#### Target Details

Target:	IRX2
Alternative Name:	IRX2 ( <a href="#">IRX2 Products</a> )
Background:	Homeodomain protein IRXA2 antibody, Iroquois homeobox 2 antibody, Iroquois homeobox

## Target Details

protein 2 antibody, Iroquois-class homeodomain protein irx-2 antibody, IRX 2 antibody, irx2 antibody, IRX2\_HUMAN antibody, IrxA2 antibody

UniProt: [Q9BZ11](#)

Pathways: [Tube Formation](#)

## Application Details

Application Notes: WB:1:500-1:2000, IHC:1:100-1:300, IF:1:200-1:1000, ELISA:1:20000,

Restrictions: For Research Use only

## Handling

Format: Liquid

Buffer: Liquid in PBS containing 50 % glycerol, 0.5 % BSA and 0.02 % sodium azide.

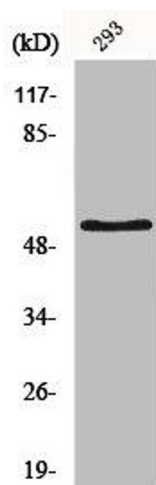
Preservative: Sodium azide

Precaution of Use: This product contains Sodium azide: a POISONOUS AND HAZARDOUS SUBSTANCE which should be handled by trained staff only.

Storage: -20 °C,-80 °C

Storage Comment: Upon receipt, store at -20°C or -80°C. Avoid repeated freeze.

## Images



### Western Blotting

**Image 1.** Western Blot analysis of HepG2 cells using IRX2 Polyclonal Antibody