

Datasheet for ABIN7187125
anti-KCNG3 antibody (Internal Region)[Go to Product page](#)

1 Image

Overview

Quantity:	100 µg
Target:	KCNG3
Binding Specificity:	Internal Region
Reactivity:	Human
Host:	Rabbit
Clonality:	Polyclonal
Conjugate:	This KCNG3 antibody is un-conjugated
Application:	ELISA, Western Blotting (WB)

Product Details

Immunogen:	Synthesized peptide derived from the Internal region of Human KCNG3.
Isotype:	IgG
Cross-Reactivity:	Human, Mouse, Rat
Purification:	The antibody was affinity-purified from rabbit antiserum by affinity-chromatography using epitope-specific immunogen.

Target Details

Target:	KCNG3
Alternative Name:	KCNG3 (KCNG3 Products)
Background:	KCNG3 antibody, Potassium voltage-gated channel subfamily G member 3 antibody, Voltage-

Target Details

gated potassium channel subunit Kv10.1 antibody, Voltage-gated potassium channel subunit Kv6.3 antibody

UniProt: [Q8TAE7](#)

Application Details

Application Notes: WB:1:500-1:2000, ELISA:1:5000,

Restrictions: For Research Use only

Handling

Format: Liquid

Buffer: Liquid in PBS containing 50 % glycerol, 0.5 % BSA and 0.02 % sodium azide.

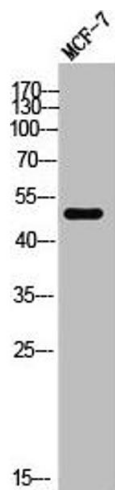
Preservative: Sodium azide

Precaution of Use: This product contains Sodium azide: a POISONOUS AND HAZARDOUS SUBSTANCE which should be handled by trained staff only.

Storage: -20 °C,-80 °C

Storage Comment: Upon receipt, store at -20°C or -80°C. Avoid repeated freeze.

Images



Western Blotting

Image 1. Western Blot analysis of MCF-7 cells using KCNG3 Polyclonal Antibody