



Datasheet for ABIN7187130

anti-KDEL3 antibody (Internal Region)



[Go to Product page](#)

1 Image

Overview

Quantity:	100 µg
Target:	KDEL3 (kDEL3)
Binding Specificity:	Internal Region
Reactivity:	Human
Host:	Rabbit
Clonality:	Polyclonal
Conjugate:	This KDEL3 antibody is un-conjugated
Application:	Western Blotting (WB), ELISA, Immunohistochemistry (IHC)

Product Details

Immunogen:	Synthesized peptide derived from the Internal region of Human KDEL Receptor 3.
Isotype:	IgG
Cross-Reactivity:	Human, Mouse
Purification:	The antibody was affinity-purified from rabbit antiserum by affinity-chromatography using epitope-specific immunogen.

Target Details

Target:	KDEL3 (kDEL3)
Alternative Name:	KDEL3 (kDEL3 Products)
Background:	KDEL3ER lumen protein-retaining receptor 3 antibody, KDEL endoplasmic reticulum protein

Target Details

retention receptor 3 antibody, KDEL receptor 3 antibody

UniProt: [O43731](#)

Pathways: [ER-Nucleus Signaling](#), [Maintenance of Protein Location](#)

Application Details

Application Notes: WB:1:500-1:2000, IHC:1:100-1:300, ELISA:1:20000,

Restrictions: For Research Use only

Handling

Format: Liquid

Buffer: Liquid in PBS containing 50 % glycerol, 0.5 % BSA and 0.02 % sodium azide.

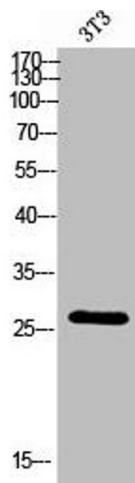
Preservative: Sodium azide

Precaution of Use: This product contains Sodium azide: a POISONOUS AND HAZARDOUS SUBSTANCE which should be handled by trained staff only.

Storage: -20 °C,-80 °C

Storage Comment: Upon receipt, store at -20°C or -80°C. Avoid repeated freeze.

Images



Western Blotting

Image 1. Western Blot analysis of 3T3 cells using KDEL Receptor 3 Polyclonal Antibody