

Datasheet for ABIN7187156

anti-KCNV2 antibody (Internal Region)[Go to Product page](#)**1** Image

Overview

Quantity:	100 µg
Target:	KCNV2
Binding Specificity:	Internal Region
Reactivity:	Human
Host:	Rabbit
Clonality:	Polyclonal
Conjugate:	This KCNV2 antibody is un-conjugated
Application:	Western Blotting (WB), ELISA

Product Details

Immunogen:	Synthesized peptide derived from the Internal region of Human KV8.2.
Isotype:	IgG
Cross-Reactivity:	Human, Mouse
Purification:	The antibody was affinity-purified from rabbit antiserum by affinity-chromatography using epitope-specific immunogen.

Target Details

Target:	KCNV2
Alternative Name:	KCNV2 (KCNV2 Products)
Background:	KCNV2 antibody, KCNV2_HUMAN antibody, KV11.1 antibody, Kv8.2 antibody, MGC120515

Target Details

antibody, Potassium channel subfamily V member 2 antibody, Potassium voltage-gated channel subfamily V member 2 antibody, RCD3B antibody, Voltage-gated potassium channel Kv8.2 antibody, Voltage-gated potassium channel subunit Kv8.2 antibody

UniProt: Q8TDN2

Application Details

Application Notes: WB:1:500-1:2000, ELISA:1:20000,

Restrictions: For Research Use only

Handling

Format: Liquid

Buffer: Liquid in PBS containing 50 % glycerol, 0.5 % BSA and 0.02 % sodium azide.

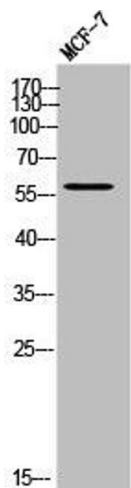
Preservative: Sodium azide

Precaution of Use: This product contains Sodium azide: a POISONOUS AND HAZARDOUS SUBSTANCE which should be handled by trained staff only.

Storage: -20 °C,-80 °C

Storage Comment: Upon receipt, store at -20°C or -80°C. Avoid repeated freeze.

Images



Western Blotting

Image 1. Western Blot analysis of MCF-7 cells using KV8.2 Polyclonal Antibody