

Datasheet for ABIN7187171  
**anti-ARHGEF12 antibody (Internal Region)**[Go to Product page](#)

## 1 Image

## Overview

Quantity:	100 µg
Target:	ARHGEF12
Binding Specificity:	Internal Region
Reactivity:	Human
Host:	Rabbit
Clonality:	Polyclonal
Conjugate:	This ARHGEF12 antibody is un-conjugated
Application:	ELISA, Western Blotting (WB)

## Product Details

Immunogen:	Synthesized peptide derived from the Internal region of Human LARG.
Isotype:	IgG
Cross-Reactivity:	Human, Mouse, Rat
Purification:	The antibody was affinity-purified from rabbit antiserum by affinity-chromatography using epitope-specific immunogen.

## Target Details

Target:	ARHGEF12
Alternative Name:	ARHGEF12 ( <a href="#">ARHGEF12 Products</a> )
Background:	ARHGC_HUMAN antibody, ARHGEF12 antibody, KIAA0382 antibody, leukemia-associated rho

## Target Details

guanine nucleotide exchange factor antibody, Leukemia-associated RhoGEF antibody, PRO2792 antibody, Rho guanine exchange factor (GEF) 12 antibody, Rho guanine nucleotide exchange factor (GEF) 12 antibody, Rho guanine nucleotide exchange factor 12 antibody, Similar to Mouse Lsc oncogene antibody

UniProt: [Q9NZN5](#)

Pathways: [Neurotrophin Signaling Pathway](#), [Regulation of G-Protein Coupled Receptor Protein Signaling](#)

## Application Details

Application Notes: WB:1:500-1:2000, ELISA:1:20000,

Restrictions: For Research Use only

## Handling

Format: Liquid

Buffer: Liquid in PBS containing 50 % glycerol, 0.5 % BSA and 0.02 % sodium azide.

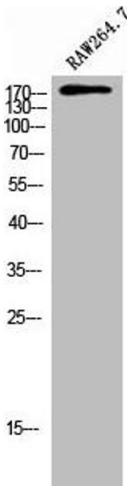
Preservative: Sodium azide

Precaution of Use: This product contains Sodium azide: a POISONOUS AND HAZARDOUS SUBSTANCE which should be handled by trained staff only.

Storage: -20 °C, -80 °C

Storage Comment: Upon receipt, store at -20°C or -80°C. Avoid repeated freeze.

## Images



### Western Blotting

**Image 1.** Western Blot analysis of RAW264.7 cells using LARG Polyclonal Antibody