



[Go to Product page](#)

Datasheet for ABIN7187189

anti-LI Cadherin antibody (Internal Region)

1 Image

Overview

Quantity:	100 µg
Target:	LI Cadherin
Binding Specificity:	Internal Region
Reactivity:	Human
Host:	Rabbit
Clonality:	Polyclonal
Conjugate:	This LI Cadherin antibody is un-conjugated
Application:	Western Blotting (WB), ELISA, Immunohistochemistry (IHC), Immunofluorescence (IF)

Product Details

Immunogen:	Synthesized peptide derived from the Internal region of Human LI-cadherin.
Isotype:	IgG
Cross-Reactivity:	Human
Purification:	The antibody was affinity-purified from rabbit antiserum by affinity-chromatography using epitope-specific immunogen.

Target Details

Target:	LI Cadherin
Alternative Name:	CDH17 (LI Cadherin Products)
Background:	BILL-cadherin antibody, CAD17_HUMAN antibody, Cadherin 16 antibody, Cadherin 16, formerly

Target Details

antibody, Cadherin 17 antibody, cadherin 17, LI cadherin (liver-intestine) antibody, cadherin, liver-intestine antibody, Cadherin-17 antibody, CDH16 antibody, CDH16, formerly antibody, Cdh17 antibody, FLJ26931 antibody, Formerly Cadherin 16 antibody, Formerly CDH16 antibody, HPT 1 antibody, HPT-1 cadherin antibody, human intestinal peptide-associated transporter HPT-1 antibody, human peptide transporter 1 antibody, Intestinal peptide-associated transporter HPT 1 antibody, Intestinal peptide-associated transporter HPT-1 antibody, LI-cadherin antibody, Liver Cadherin antibody, liver intestine cadherin antibody, Liver-intestine cadherin antibody

UniProt: [Q12864](#)

Application Details

Application Notes: WB:1:500-1:2000, IHC:1:100-1:300, IF:1:200-1:1000, ELISA:1:40000,

Restrictions: For Research Use only

Handling

Format: Liquid

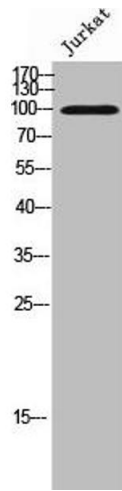
Buffer: Liquid in PBS containing 50 % glycerol, 0.5 % BSA and 0.02 % sodium azide.

Preservative: Sodium azide

Precaution of Use: This product contains Sodium azide: a POISONOUS AND HAZARDOUS SUBSTANCE which should be handled by trained staff only.

Storage: -20 °C,-80 °C

Storage Comment: Upon receipt, store at -20°C or -80°C. Avoid repeated freeze.



Western Blotting

Image 1. Western Blot analysis of Jurkat cells using LI-cadherin Polyclonal Antibody