



Datasheet for ABIN7187196  
**anti-LILRA1 antibody (Internal Region)**



[Go to Product page](#)

2 Images

Overview

Quantity:	100 µg
Target:	LILRA1
Binding Specificity:	Internal Region
Reactivity:	Human
Host:	Rabbit
Clonality:	Polyclonal
Conjugate:	This LILRA1 antibody is un-conjugated
Application:	Western Blotting (WB), ELISA, Immunofluorescence (IF)

Product Details

Immunogen:	Synthesized peptide derived from the Internal region of Human LIR-6.
Isotype:	IgG
Cross-Reactivity:	Human
Purification:	The antibody was affinity-purified from rabbit antiserum by affinity-chromatography using epitope-specific immunogen.

Target Details

Target:	LILRA1
Alternative Name:	LILRA1 ( <a href="#">LILRA1 Products</a> )
Background:	CD85 antigen-like family member I antibody, CD85i antibody, Leukocyte immunoglobulin-like

## Target Details

receptor 6 antibody, Leukocyte immunoglobulin-like receptor subfamily A member 1 antibody, Leukocyte immunoglobulin-like receptor, subfamily A (with TM domain), member 1 antibody, Leukocyte immunoglobulin-like receptor, subfamily A (with TM domain), member 1 soluble isoform antibody, LILRA1 antibody, LIR-6 antibody, LIR6 antibody, LIRA1\_HUMAN antibody

UniProt: [O75019](#)

## Application Details

Application Notes: WB:1:500-1:2000, IF:1:200-1:1000, ELISA:1:20000,

Restrictions: For Research Use only

## Handling

Format: Liquid

Buffer: Liquid in PBS containing 50 % glycerol, 0.5 % BSA and 0.02 % sodium azide.

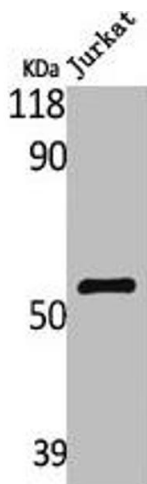
Preservative: Sodium azide

Precaution of Use: This product contains Sodium azide: a POISONOUS AND HAZARDOUS SUBSTANCE which should be handled by trained staff only.

Storage: -20 °C,-80 °C

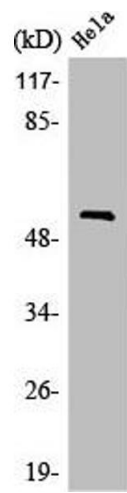
Storage Comment: Upon receipt, store at -20°C or -80°C. Avoid repeated freeze.

## Images



### Western Blotting

**Image 1.** Western Blot analysis of Jurkat cells using LIR-6 Polyclonal Antibody



### Western Blotting

**Image 2.** Western Blot analysis of MCF7 cells using LIR-6 Polyclonal Antibody