



Datasheet for ABIN7187256
anti-KCNMA1 antibody (Internal Region)



[Go to Product page](#)

1 Image

Overview

Quantity:	100 µg
Target:	KCNMA1
Binding Specificity:	Internal Region
Reactivity:	Human
Host:	Rabbit
Clonality:	Polyclonal
Conjugate:	This KCNMA1 antibody is un-conjugated
Application:	Western Blotting (WB), Immunohistochemistry (IHC), ELISA

Product Details

Immunogen:	Synthesized peptide derived from the Internal region of Human MaxiKalpha.
Isotype:	IgG
Cross-Reactivity:	Human, Mouse, Rat
Purification:	The antibody was affinity-purified from rabbit antiserum by affinity-chromatography using epitope-specific immunogen.

Target Details

Target:	KCNMA1
Alternative Name:	KCNMA1 (KCNMA1 Products)
Background:	Subfamily M subunit alpha-1 antibody, BK channel antibody, BKCA alpha antibody, BKCA alpha

Target Details

subunit antibody, BKTM antibody, Calcium-activated potassium channel antibody, Calcium-activated potassium channel subunit alpha-1 antibody, Drosophila slowpoke like antibody, hSlo antibody, K(VCA)alpha antibody, KCa1.1 antibody, KCMA1_HUMAN antibody, KCNMA antibody, KCNMA1 antibody, Maxi K channel antibody, Maxi Potassium channel alpha antibody, MaxiK antibody, SAKCA antibody, SLO alpha antibody, SLO antibody, Slo homolog antibody, Slo-alpha antibody, Slo1 antibody, Slowpoke homolog antibody

UniProt: [Q12791](#)

Pathways: [Regulation of Hormone Metabolic Process](#), [Sensory Perception of Sound](#)

Application Details

Application Notes: WB:1:500-1:2000, IHC:1:100-1:300, ELISA:1:40000,

Restrictions: For Research Use only

Handling

Format: Liquid

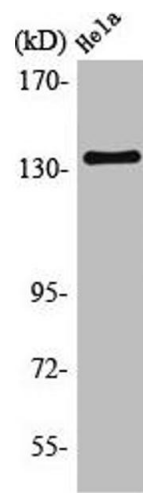
Buffer: Liquid in PBS containing 50 % glycerol, 0.5 % BSA and 0.02 % sodium azide.

Preservative: Sodium azide

Precaution of Use: This product contains Sodium azide: a POISONOUS AND HAZARDOUS SUBSTANCE which should be handled by trained staff only.

Storage: -20 °C,-80 °C

Storage Comment: Upon receipt, store at -20°C or -80°C. Avoid repeated freeze.



Western Blotting

Image 1. Western Blot analysis of HeLa cells using MaxiKa Polyclonal Antibody