



[Go to Product page](#)

Datasheet for ABIN7187269

anti-SLC16A14 antibody (Internal Region)

1 Image

Overview

Quantity:	100 µg
Target:	SLC16A14
Binding Specificity:	Internal Region
Reactivity:	Human
Host:	Rabbit
Clonality:	Polyclonal
Conjugate:	This SLC16A14 antibody is un-conjugated
Application:	ELISA, Western Blotting (WB)

Product Details

Immunogen:	Synthesized peptide derived from the Internal region of Human MCT14.
Isotype:	IgG
Cross-Reactivity:	Human, Mouse
Purification:	The antibody was affinity-purified from rabbit antiserum by affinity-chromatography using epitope-specific immunogen.

Target Details

Target:	SLC16A14
Alternative Name:	SLC16A14 (SLC16A14 Products)
Background:	FLJ30794 antibody, MCT 14 antibody, MCT14 antibody, Monocarboxylate transporter 14

Target Details

antibody, MOT14_HUMAN antibody, OTTHUMP00000204389 antibody, OTTHUMP00000204390 antibody, Slc16a14 antibody, Solute carrier family 16 (monocarboxylic acid transporters), member 14 antibody, Solute carrier family 16 member 14 antibody, Solute carrier family 16, member 14 (monocarboxylic acid transporter 14) antibody

UniProt: [Q7RTX9](#)

Application Details

Application Notes: WB:1:500-1:2000, ELISA:1:10000,

Restrictions: For Research Use only

Handling

Format: Liquid

Buffer: Liquid in PBS containing 50 % glycerol, 0.5 % BSA and 0.02 % sodium azide.

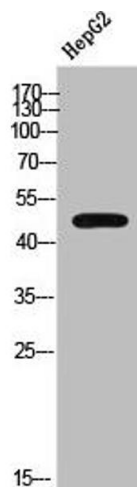
Preservative: Sodium azide

Precaution of Use: This product contains Sodium azide: a POISONOUS AND HAZARDOUS SUBSTANCE which should be handled by trained staff only.

Storage: -20 °C,-80 °C

Storage Comment: Upon receipt, store at -20°C or -80°C. Avoid repeated freeze.

Images



Western Blotting

Image 1. Western Blot analysis of HEPG2 cells using MCT14 Polyclonal Antibody