



[Go to Product page](#)

Datasheet for ABIN7187280

anti-MAP3K3 antibody (Internal Region)

1 Image

Overview

Quantity:	100 µg
Target:	MAP3K3
Binding Specificity:	Internal Region
Reactivity:	Human
Host:	Rabbit
Clonality:	Polyclonal
Conjugate:	This MAP3K3 antibody is un-conjugated
Application:	Western Blotting (WB), ELISA, Immunohistochemistry (IHC), Immunofluorescence (IF)

Product Details

Immunogen:	Synthesized peptide derived from the Internal region of Human MEK Kinase-3.
Isotype:	IgG
Cross-Reactivity:	Human, Mouse
Purification:	The antibody was affinity-purified from rabbit antiserum by affinity-chromatography using epitope-specific immunogen.

Target Details

Target:	MAP3K3
Alternative Name:	MAP3K3 (MAP3K3 Products)
Background:	M3K3_HUMAN antibody, MAP/ERK kinase kinase 3 antibody, MAP3K3 antibody, MAPK/ERK

Target Details

kinase kinase 3 antibody, MAPKKK3 antibody, MEK kinase 3 antibody, MEKK 3 antibody, MEKK3 antibody, Mitogen activated protein kinase kinase kinase 3 antibody, Mitogen-activated protein kinase kinase kinase 3 antibody

UniProt: [Q99759](#)

Pathways: [MAPK Signaling](#)

Application Details

Application Notes: WB:1:500-1:2000, IHC:1:100-1:300, IF:1:200-1:1000, ELISA:1:20000,

Restrictions: For Research Use only

Handling

Format: Liquid

Buffer: Liquid in PBS containing 50 % glycerol, 0.5 % BSA and 0.02 % sodium azide.

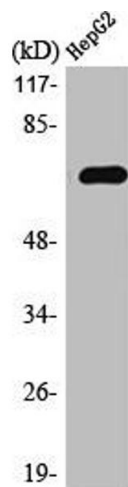
Preservative: Sodium azide

Precaution of Use: This product contains Sodium azide: a POISONOUS AND HAZARDOUS SUBSTANCE which should be handled by trained staff only.

Storage: -20 °C,-80 °C

Storage Comment: Upon receipt, store at -20°C or -80°C. Avoid repeated freeze.

Images



Western Blotting

Image 1. Western Blot analysis of HepG2 cells using MEK Kinase-3 Polyclonal Antibody