

Datasheet for ABIN7187297  
**anti-SPON2 antibody (Internal Region)**[Go to Product page](#)

## 1 Image

## Overview

Quantity:	100 µg
Target:	SPON2
Binding Specificity:	Internal Region
Reactivity:	Human
Host:	Rabbit
Clonality:	Polyclonal
Conjugate:	This SPON2 antibody is un-conjugated
Application:	Western Blotting (WB), ELISA

## Product Details

Immunogen:	Synthesized peptide derived from the Internal region of Human Mindin.
Isotype:	IgG
Cross-Reactivity:	Human, Monkey, Mouse, Rat
Purification:	The antibody was affinity-purified from rabbit antiserum by affinity-chromatography using epitope-specific immunogen.

## Target Details

Target:	SPON2
Alternative Name:	SPON2 ( <a href="#">SPON2 Products</a> )
Background:	Differentially expressed in cancerous and non-cancerous lung cells 1 antibody, DIL 1 antibody,

Target Details

DIL-1 antibody, DIL1 antibody, DKFZp686G21139 antibody, FLJ16313 antibody, FLJ22401 antibody, FLJ34460 antibody, M spondin antibody, Mindin antibody, ORF Names: antibody, SPON 2 antibody, Spon2 antibody, SPON2\_HUMAN antibody, Spondin 2 antibody, Spondin 2 extracellular matrix protein antibody, Spondin-2 antibody

UniProt: [Q9BUD6](#)

Application Details

Application Notes: WB:1:500-1:2000, ELISA:1:40000,

Restrictions: For Research Use only

Handling

Format: Liquid

Buffer: Liquid in PBS containing 50 % glycerol, 0.5 % BSA and 0.02 % sodium azide.

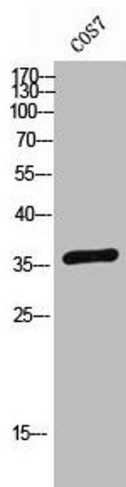
Preservative: Sodium azide

Precaution of Use: This product contains Sodium azide: a POISONOUS AND HAZARDOUS SUBSTANCE which should be handled by trained staff only.

Storage: -20 °C,-80 °C

Storage Comment: Upon receipt, store at -20°C or -80°C. Avoid repeated freeze.

Images



**Western Blotting**

**Image 1.** Western Blot analysis of COS-7 cells using Mindin Polyclonal Antibody