

Datasheet for ABIN7187300  
**anti-CCL4L1 antibody (Internal Region)**



[Go to Product page](#)

2 Images

## Overview

Quantity:	100 µg
Target:	CCL4L1
Binding Specificity:	Internal Region
Reactivity:	Human
Host:	Rabbit
Clonality:	Polyclonal
Conjugate:	This CCL4L1 antibody is un-conjugated
Application:	Western Blotting (WB), ELISA

## Product Details

Immunogen:	Synthesized peptide derived from the Internal region of Human MIP-1b.
Isotype:	IgG
Cross-Reactivity:	Human
Purification:	The antibody was affinity-purified from rabbit antiserum by affinity-chromatography using epitope-specific immunogen.

## Target Details

Target:	CCL4L1
Alternative Name:	CCL4L1 ( <a href="#">CCL4L1 Products</a> )
Background:	CCL4L1 antibody, CCL4L antibody, LAG1 antibody, SCYA4L1, antibody, CCL4L2 antibody,

## Target Details

CCL4L antibody, SCYA4L2C-C motif chemokine 4-like antibody, Lymphocyte activation gene 1 protein antibody, LAG-1 antibody, Macrophage inflammatory protein 1-beta antibody, MIP-1-beta antibody, Monocyte adherence-induced protein 5-alpha antibody, Small-inducible cytokine A4-like antibody

UniProt: [Q8NHW4](#)

## Application Details

Application Notes: WB:1:500-1:2000, ELISA:1:10000,

Restrictions: For Research Use only

## Handling

Format: Liquid

Buffer: Liquid in PBS containing 50 % glycerol, 0.5 % BSA and 0.02 % sodium azide.

Preservative: Sodium azide

Precaution of Use: This product contains Sodium azide: a POISONOUS AND HAZARDOUS SUBSTANCE which should be handled by trained staff only.

Storage: -20 °C,-80 °C

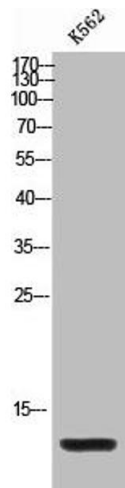
Storage Comment: Upon receipt, store at -20°C or -80°C. Avoid repeated freeze.

## Images



### Western Blotting

**Image 1.** Western Blot analysis of K562 cells using MIP-1b Polyclonal Antibody



### Western Blotting

**Image 2.** Western Blot analysis of K562 cells using MIP-1b Polyclonal Antibody