



[Go to Product page](#)

Datasheet for ABIN7187323

anti-MMP14 antibody (Cleaved-Tyr112)

1 Image

Overview

Quantity:	100 µg
Target:	MMP14
Binding Specificity:	Cleaved-Tyr112
Reactivity:	Human
Host:	Rabbit
Clonality:	Polyclonal
Application:	Western Blotting (WB), ELISA

Product Details

Immunogen:	Synthesized peptide derived from the Internal region of Human MMP-14.
Isotype:	IgG
Cross-Reactivity:	Human, Mouse, Rat
Purification:	The antibody was affinity-purified from rabbit antiserum by affinity-chromatography using epitope-specific immunogen.

Target Details

Target:	MMP14
Alternative Name:	MMP14 (MMP14 Products)
Background:	Matrix metalloproteinase 14 (membrane inserted) antibody, Matrix metalloproteinase 14 antibody, Matrix metalloproteinase-14 antibody, Membrane type 1 matrix metalloproteinase antibody, Membrane type 1 metalloprotease antibody, Membrane type matrix

Target Details

metalloproteinase 1 antibody, Membrane-type matrix metalloproteinase 1 antibody, Membrane-type-1 matrix metalloproteinase antibody, MMP 14 antibody, MMP X1 antibody, MMP-14 antibody, MMP-X1 antibody, Mmp14 antibody, MMP14_HUMAN antibody, MMPX1 antibody, MT MMP 1 antibody, MT-MMP 1 antibody, MT1 MMP antibody, MT1-MMP antibody, MT1MMP antibody, MTMMP 1 antibody, MTMMP1 antibody

UniProt: [P50281](#)

Pathways: [Autophagy](#)

Application Details

Application Notes: WB:1:500-1:2000, ELISA:1:20000,

Restrictions: For Research Use only

Handling

Format: Liquid

Buffer: Liquid in PBS containing 50 % glycerol, 0.5 % BSA and 0.02 % sodium azide.

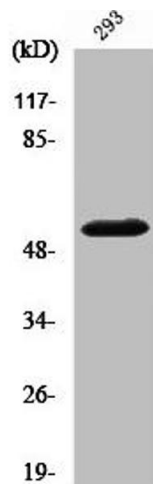
Preservative: Sodium azide

Precaution of Use: This product contains Sodium azide: a POISONOUS AND HAZARDOUS SUBSTANCE which should be handled by trained staff only.

Storage: -20 °C,-80 °C

Storage Comment: Upon receipt, store at -20°C or -80°C. Avoid repeated freeze.

Images



Western Blotting

Image 1. Western Blot analysis of 293 cells using Cleaved-MMP-14 (Y112) Polyclonal Antibody