

Datasheet for ABIN7187330
anti-Meningioma 1 antibody (Internal Region)



[Go to Product page](#)

1 Image

Overview

Quantity:	100 µg
Target:	Meningioma 1 (MN1)
Binding Specificity:	Internal Region
Reactivity:	Human
Host:	Rabbit
Clonality:	Polyclonal
Conjugate:	This Meningioma 1 antibody is un-conjugated
Application:	Western Blotting (WB), ELISA

Product Details

Immunogen:	Synthesized peptide derived from the Internal region of Human MN1.
Isotype:	IgG
Cross-Reactivity:	Human
Purification:	The antibody was affinity-purified from rabbit antiserum by affinity-chromatography using epitope-specific immunogen.

Target Details

Target:	Meningioma 1 (MN1)
Alternative Name:	MN1 (MN1 Products)
Background:	AA003644 antibody, AA009236 antibody, dJ353E16.2 antibody, Meningioma (disrupted in

Target Details

balanced translocation) 1 antibody, Meningioma (translocation balanced) antibody, Meningioma 1 antibody, meningioma chromosome region 1 antibody, MGCR antibody, MGCR1 antibody, MGCR1-PEN antibody, MN1 antibody, MN1_HUMAN antibody, Probable tumor suppressor protein MN1 antibody, RGD1565571 antibody

UniProt: [Q10571](#)

Application Details

Application Notes: WB:1:500-1:2000, ELISA:1:40000,

Restrictions: For Research Use only

Handling

Format: Liquid

Buffer: Liquid in PBS containing 50 % glycerol, 0.5 % BSA and 0.02 % sodium azide.

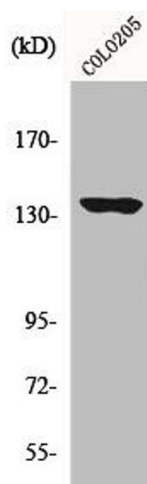
Preservative: Sodium azide

Precaution of Use: This product contains Sodium azide: a POISONOUS AND HAZARDOUS SUBSTANCE which should be handled by trained staff only.

Storage: -20 °C,-80 °C

Storage Comment: Upon receipt, store at -20°C or -80°C. Avoid repeated freeze.

Images



Western Blotting

Image 1. Western Blot analysis of COLO205 cells using MN1 Polyclonal Antibody