

Datasheet for ABIN7187346
anti-MRGPRE antibody (Internal Region)[Go to Product page](#)

1 Image

Overview

Quantity:	100 µg
Target:	MRGPRES
Binding Specificity:	Internal Region
Reactivity:	Human
Host:	Rabbit
Clonality:	Polyclonal
Conjugate:	This MRGPRES antibody is un-conjugated
Application:	Western Blotting (WB), ELISA

Product Details

Immunogen:	Synthesized peptide derived from the Internal region of Human MRGE.
Isotype:	IgG
Cross-Reactivity:	Human, Mouse, Rat
Purification:	The antibody was affinity-purified from rabbit antiserum by affinity-chromatography using epitope-specific immunogen.

Target Details

Target:	MRGPRES
Alternative Name:	MRGPRES (MRGPRES Products)
Background:	G protein coupled receptor 167 antibody, G-protein coupled receptor 167 antibody, GPR167

Target Details

antibody, Mas related G protein coupled MRGE antibody, MAS related GPR member E antibody, Mas-related G-protein coupled receptor member E antibody, MRGE antibody, Mrgpre antibody, MRGRE_HUMAN antibody

UniProt: [Q86SM8](#)

Application Details

Application Notes: WB:1:500-1:2000, ELISA:1:40000,

Restrictions: For Research Use only

Handling

Format: Liquid

Buffer: Liquid in PBS containing 50 % glycerol, 0.5 % BSA and 0.02 % sodium azide.

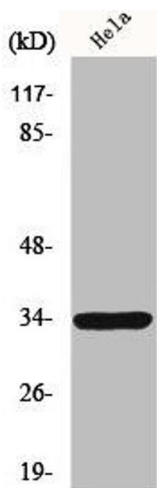
Preservative: Sodium azide

Precaution of Use: This product contains Sodium azide: a POISONOUS AND HAZARDOUS SUBSTANCE which should be handled by trained staff only.

Storage: -20 °C,-80 °C

Storage Comment: Upon receipt, store at -20°C or -80°C. Avoid repeated freeze.

Images



Western Blotting

Image 1. Western Blot analysis of HeLa cells using MRGE Polyclonal Antibody