



[Go to Product page](#)

Datasheet for ABIN7187350

anti-MRPL15 antibody (Internal Region)

1 Image

Overview

Quantity:	100 µg
Target:	MRPL15
Binding Specificity:	Internal Region
Reactivity:	Human
Host:	Rabbit
Clonality:	Polyclonal
Conjugate:	This MRPL15 antibody is un-conjugated
Application:	Western Blotting (WB), ELISA, Immunohistochemistry (IHC), Immunofluorescence (IF)

Product Details

Immunogen:	Synthesized peptide derived from the Internal region of Human MRP-L15.
Isotype:	IgG
Cross-Reactivity:	Human, Mouse
Purification:	The antibody was affinity-purified from rabbit antiserum by affinity-chromatography using epitope-specific immunogen.

Target Details

Target:	MRPL15
Alternative Name:	MRPL15 (MRPL15 Products)
Background:	MRPL15 antibody, HSPC145 antibody, 39S ribosomal protein L15 antibody, mitochondrial

Target Details

antibody, L15mt antibody, MRP-L15 antibody, Mitochondrial large ribosomal subunit protein uL15m antibody

UniProt: [Q9P015](#)

Application Details

Application Notes: WB:1:500-1:2000, IHC:1:100-1:300, IF:1:200-1:1000, ELISA:1:40000,

Restrictions: For Research Use only

Handling

Format: Liquid

Buffer: Liquid in PBS containing 50 % glycerol, 0.5 % BSA and 0.02 % sodium azide.

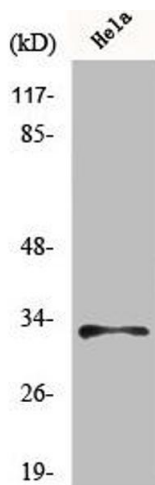
Preservative: Sodium azide

Precaution of Use: This product contains Sodium azide: a POISONOUS AND HAZARDOUS SUBSTANCE which should be handled by trained staff only.

Storage: -20 °C,-80 °C

Storage Comment: Upon receipt, store at -20°C or -80°C. Avoid repeated freeze.

Images



Western Blotting

Image 1. Western Blot analysis of MCF7 cells using MRP-L15 Polyclonal Antibody