



Datasheet for ABIN7187415
anti-N4BP1 antibody (Internal Region)



[Go to Product page](#)

2 Images

Overview

Quantity:	100 µg
Target:	N4BP1
Binding Specificity:	Internal Region
Reactivity:	Human
Host:	Rabbit
Clonality:	Polyclonal
Conjugate:	This N4BP1 antibody is un-conjugated
Application:	Western Blotting (WB), ELISA, Immunohistochemistry (IHC)

Product Details

Immunogen:	Synthesized peptide derived from the Internal region of Human N4BP1.
Isotype:	IgG
Cross-Reactivity:	Human
Purification:	The antibody was affinity-purified from rabbit antiserum by affinity-chromatography using epitope-specific immunogen.

Target Details

Target:	N4BP1
Alternative Name:	N4BP1 (N4BP1 Products)
Background:	FLJ31821 antibody, KIAA0615 antibody, MGC176730 antibody, N4BP1 antibody,

Target Details

N4BP1_HUMAN antibody, NEDD4 binding protein 1 antibody, NEDD4-binding protein 1 antibody

UniProt: [O75113](#)

Application Details

Application Notes: WB:1:500-1:2000, IHC:1:100-1:300, ELISA:1:40000,

Restrictions: For Research Use only

Handling

Format: Liquid

Buffer: Liquid in PBS containing 50 % glycerol, 0.5 % BSA and 0.02 % sodium azide.

Preservative: Sodium azide

Precaution of Use: This product contains Sodium azide: a POISONOUS AND HAZARDOUS SUBSTANCE which should be handled by trained staff only.

Storage: -20 °C,-80 °C

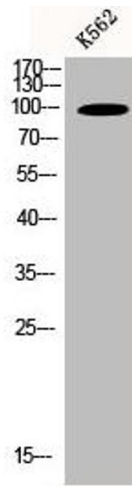
Storage Comment: Upon receipt, store at -20°C or -80°C. Avoid repeated freeze.

Images



Western Blotting

Image 1. Western Blot analysis of K562 cells using N4BP1 Polyclonal Antibody



Western Blotting

Image 2. Western Blot analysis of K562 cells using N4BP1 Polyclonal Antibody