

Datasheet for ABIN7187439

**anti-SLC8A1 antibody (Internal Region)**[Go to Product page](#)**1** Image

## Overview

Quantity:	100 µg
Target:	SLC8A1
Binding Specificity:	Internal Region
Reactivity:	Human
Host:	Rabbit
Clonality:	Polyclonal
Conjugate:	This SLC8A1 antibody is un-conjugated
Application:	Western Blotting (WB), ELISA

## Product Details

Immunogen:	Synthesized peptide derived from the Internal region of Human NCX1.
Isotype:	IgG
Cross-Reactivity:	Human, Mouse, Rat
Purification:	The antibody was affinity-purified from rabbit antiserum by affinity-chromatography using epitope-specific immunogen.

## Target Details

Target:	SLC8A1
Alternative Name:	SLC8A1 ( <a href="#">SLC8A1 Products</a> )
Background:	CNC antibody, DKFZp779F0871 antibody, MGC119581 antibody, Na(+)/Ca(2+)-exchange

## Target Details

protein 1 antibody, Na<sup>+</sup>/Ca<sup>2+</sup> exchange protein 1 antibody, Na<sup>+</sup>/Ca<sup>2+</sup> exchanger antibody, NAC1\_HUMAN antibody, NCX 1 antibody, NCX antibody, NCX1 antibody, SLC8A1 antibody, SLC8A1 protein antibody, Sodium Calcium Exchanger antibody, Sodium/calcium exchanger 1 antibody, Solute carrier family 8 (sodium/calcium exchanger) member 1 antibody, Solute carrier family 8 member 1 antibody

UniProt: [P32418](#)

Pathways: [Myometrial Relaxation and Contraction](#)

## Application Details

Application Notes: WB:1:500-1:2000, ELISA:1:5000,

Restrictions: For Research Use only

## Handling

Format: Liquid

Buffer: Liquid in PBS containing 50 % glycerol, 0.5 % BSA and 0.02 % sodium azide.

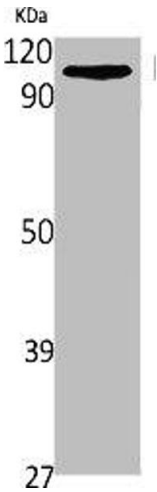
Preservative: Sodium azide

Precaution of Use: This product contains Sodium azide: a POISONOUS AND HAZARDOUS SUBSTANCE which should be handled by trained staff only.

Storage: -20 °C,-80 °C

Storage Comment: Upon receipt, store at -20°C or -80°C. Avoid repeated freeze.

## Images



### Western Blotting

**Image 1.** Western Blot analysis of 293 cells using NCX1 Polyclonal Antibody