

Datasheet for ABIN7187483
anti-CSPG5 antibody (Internal Region)



[Go to Product page](#)

2 Images

Overview

Quantity:	100 µg
Target:	CSPG5
Binding Specificity:	Internal Region
Reactivity:	Human
Host:	Rabbit
Clonality:	Polyclonal
Conjugate:	This CSPG5 antibody is un-conjugated
Application:	Western Blotting (WB), ELISA

Product Details

Immunogen:	Synthesized peptide derived from the Internal region of Human Neuroglycan C.
Isotype:	IgG
Cross-Reactivity:	Human, Mouse, Rat
Purification:	The antibody was affinity-purified from rabbit antiserum by affinity-chromatography using epitope-specific immunogen.

Target Details

Target:	CSPG5
Alternative Name:	CSPG5 (CSPG5 Products)
Background:	Acidic leucine rich EGF like domain containing brain protein antibody, Acidic leucine-rich EGF-

Target Details

like domain-containing brain protein antibody, Caleb antibody, Chondroitin sulfate proteoglycan 5 (neuroglycan C) antibody, Chondroitin sulfate proteoglycan 5 antibody, CSPG5 antibody, CSPG5_HUMAN antibody, MGC44034 antibody, Neuroglycan C antibody, Ngc antibody, OTTHUMP00000164796 antibody, OTTHUMP00000164797 antibody, OTTHUMP00000210429 antibody

UniProt: [O95196](#)

Pathways: [Glycosaminoglycan Metabolic Process](#)

Application Details

Application Notes: WB:1:500-1:2000, ELISA:1:40000,

Restrictions: For Research Use only

Handling

Format: Liquid

Buffer: Liquid in PBS containing 50 % glycerol, 0.5 % BSA and 0.02 % sodium azide.

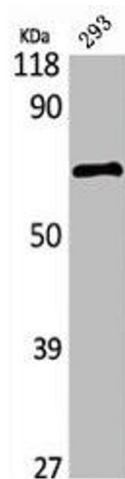
Preservative: Sodium azide

Precaution of Use: This product contains Sodium azide: a POISONOUS AND HAZARDOUS SUBSTANCE which should be handled by trained staff only.

Storage: -20 °C,-80 °C

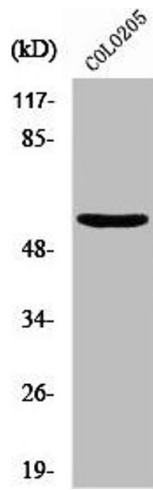
Storage Comment: Upon receipt, store at -20°C or -80°C. Avoid repeated freeze.

Images



Western Blotting

Image 1. Western Blot analysis of 293 cells using Neuroglycan C Polyclonal Antibody



Western Blotting

Image 2. Western Blot analysis of HeLa cells using Neuroglycan C Polyclonal Antibody