



[Go to Product page](#)

Datasheet for ABIN7187497

anti-NFRKB antibody (Internal Region)

2 Images

Overview

Quantity:	100 µg
Target:	NFRKB
Binding Specificity:	Internal Region
Reactivity:	Human
Host:	Rabbit
Clonality:	Polyclonal
Conjugate:	This NFRKB antibody is un-conjugated
Application:	Western Blotting (WB), ELISA

Product Details

Immunogen:	Synthesized peptide derived from the Internal region of Human NFRkappaB.
Isotype:	IgG
Cross-Reactivity:	Human, Monkey, Mouse
Purification:	The antibody was affinity-purified from rabbit antiserum by affinity-chromatography using epitope-specific immunogen.

Target Details

Target:	NFRKB
Alternative Name:	NFRKB (NFRKB Products)
Background:	NFRKB antibody, INO80G antibody, Nuclear factor related to kappa-B-binding protein antibody,

Target Details

DNA-binding protein R kappa-B antibody, INO80 complex subunit G antibody

UniProt: [Q6P4R8](#)

Application Details

Application Notes: WB:1:500-1:2000, ELISA:1:40000,

Restrictions: For Research Use only

Handling

Format: Liquid

Buffer: Liquid in PBS containing 50 % glycerol, 0.5 % BSA and 0.02 % sodium azide.

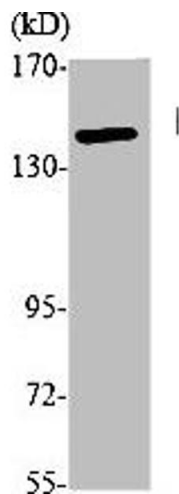
Preservative: Sodium azide

Precaution of Use: This product contains Sodium azide: a POISONOUS AND HAZARDOUS SUBSTANCE which should be handled by trained staff only.

Storage: -20 °C,-80 °C

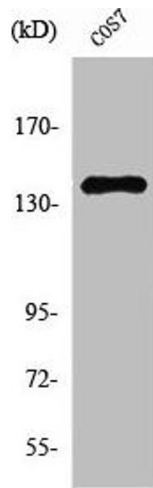
Storage Comment: Upon receipt, store at -20°C or -80°C. Avoid repeated freeze.

Images



Western Blotting

Image 1. Western Blot analysis of various cells using NFRk B Polyclonal Antibody



Western Blotting

Image 2. Western Blot analysis of COS7 cells using NFRkB Polyclonal Antibody