

Datasheet for ABIN7187503

anti-SLC9A9 antibody (Internal Region)



[Go to Product page](#)

2 Images

Overview

Quantity:	100 µg
Target:	SLC9A9
Binding Specificity:	Internal Region
Reactivity:	Human
Host:	Rabbit
Clonality:	Polyclonal
Conjugate:	This SLC9A9 antibody is un-conjugated
Application:	Western Blotting (WB), ELISA

Product Details

Immunogen:	Synthesized peptide derived from the Internal region of Human NHE-9.
Isotype:	IgG
Cross-Reactivity:	Human, Mouse
Purification:	The antibody was affinity-purified from rabbit antiserum by affinity-chromatography using epitope-specific immunogen.

Target Details

Target:	SLC9A9
Alternative Name:	SLC9A9 (SLC9A9 Products)
Background:	5730527A11Rik antibody, 9930105B05 antibody, A1854429 antibody, FLJ35613 antibody,

Target Details

Na(+)/H(+) exchanger 9 antibody, Nbla00118 antibody, NHE 9 antibody, NHE-9 antibody, NHE9 antibody, Putative protein product of Nbla00118 antibody, SL9A9_HUMAN antibody, Slc9a9 antibody, Sodium/hydrogen exchanger 9 antibody, Sodium/proton exchanger NHE9 antibody, Solute carrier family 9 (sodium/hydrogen exchanger) isoform 9 antibody, Solute carrier family 9 (sodium/hydrogen exchanger) member 9 antibody, Solute carrier family 9 member 9 antibody

UniProt: [Q8IVB4](#)

Application Details

Application Notes: WB:1:500-1:2000, ELISA:1:40000,

Restrictions: For Research Use only

Handling

Format: Liquid

Buffer: Liquid in PBS containing 50 % glycerol, 0.5 % BSA and 0.02 % sodium azide.

Preservative: Sodium azide

Precaution of Use: This product contains Sodium azide: a POISONOUS AND HAZARDOUS SUBSTANCE which should be handled by trained staff only.

Storage: -20 °C,-80 °C

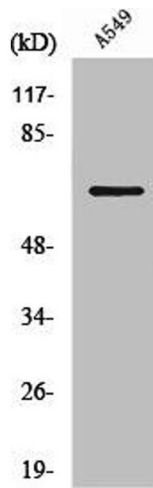
Storage Comment: Upon receipt, store at -20°C or -80°C. Avoid repeated freeze.

Images



Western Blotting

Image 1. Western Blot analysis of Jurkat K562 NIH-3T3 cells using NHE-9 Polyclonal Antibody



Western Blotting

Image 2. Western Blot analysis of RAW264.7 cells using NHE-9 Polyclonal Antibody