

Datasheet for ABIN7187512
anti-NCR3 antibody (Internal Region)

2 Images

[Go to Product page](#)

Overview

Quantity:	100 µg
Target:	NCR3
Binding Specificity:	Internal Region
Reactivity:	Human
Host:	Rabbit
Clonality:	Polyclonal
Application:	Western Blotting (WB), ELISA

Product Details

Immunogen:	Synthesized peptide derived from the Internal region of Human NKp30.
Isotype:	IgG
Cross-Reactivity:	Human, Rat
Purification:	The antibody was affinity-purified from rabbit antiserum by affinity-chromatography using epitope-specific immunogen.

Target Details

Target:	NCR3
Alternative Name:	NCR3 (NCR3 Products)
Background:	1C7 antibody, Activating natural killer receptor p30 antibody, Activating NK A1 receptor antibody, CD337 antibody, CD337 antigen antibody, LY117 antibody, Lymphocyte antigen 117 antibody, MALS antibody, Natural cytotoxicity triggering receptor 3 antibody, Natural killer cell

Target Details

	p30 related protein antibody, Natural killer cell p30-related protein antibody, Ncr3 antibody, NCTR3_HUMAN antibody, NK-p30 antibody, NKp30 antibody
UniProt:	O14931
Pathways:	Regulation of Leukocyte Mediated Immunity , Positive Regulation of Immune Effector Process

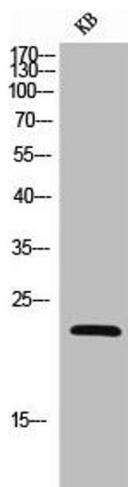
Application Details

Application Notes:	WB:1:500-1:2000, ELISA:1:10000,
Restrictions:	For Research Use only

Handling

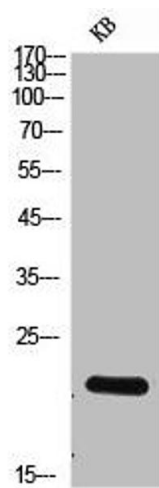
Format:	Liquid
Buffer:	Liquid in PBS containing 50 % glycerol, 0.5 % BSA and 0.02 % sodium azide.
Preservative:	Sodium azide
Precaution of Use:	This product contains Sodium azide: a POISONOUS AND HAZARDOUS SUBSTANCE which should be handled by trained staff only.
Storage:	-20 °C,-80 °C
Storage Comment:	Upon receipt, store at -20°C or -80°C. Avoid repeated freeze.

Images



Western Blotting

Image 1. Western Blot analysis of KB cells using NKp30 Polyclonal Antibody



Western Blotting

Image 2. Western Blot analysis of KB cells using NKp30 Polyclonal Antibody