



[Go to Product page](#)

Datasheet for ABIN7187544
anti-NSF antibody (Internal Region)

1 Image

Overview

Quantity:	100 µg
Target:	NSF
Binding Specificity:	Internal Region
Reactivity:	Human
Host:	Rabbit
Clonality:	Polyclonal
Application:	Western Blotting (WB), ELISA

Product Details

Immunogen:	Synthesized peptide derived from the Internal region of Human NSF.
Isotype:	IgG
Cross-Reactivity:	Human, Mouse, Rat
Purification:	The antibody was affinity-purified from rabbit antiserum by affinity-chromatography using epitope-specific immunogen.

Target Details

Target:	NSF
Alternative Name:	NSF (NSF Products)
Background:	N ethylmaleimide sensitive factor antibody, N ethylmaleimide sensitive factor like protein antibody, N ethylmaleimide sensitive fusion protein antibody, N-ethylmaleimide-sensitive fusion protein antibody, NEM sensitive fusion protein antibody, NEM-sensitive fusion protein antibody,

Target Details

NSF antibody, NSF_HUMAN antibody, SKD 2 antibody, SKD2 antibody, Vesicle fusing ATPase antibody, Vesicle-fusing ATPase antibody, Vesicular fusion protein NSF antibody, Vesicular-fusion protein NSF antibody

UniProt: [P46459](#)

Application Details

Application Notes: WB:1:500-1:2000, ELISA:1:40000,

Restrictions: For Research Use only

Handling

Format: Liquid

Buffer: Liquid in PBS containing 50 % glycerol, 0.5 % BSA and 0.02 % sodium azide.

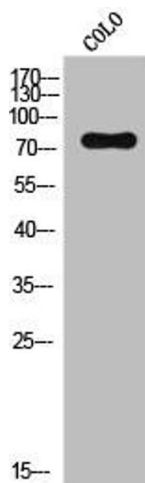
Preservative: Sodium azide

Precaution of Use: This product contains Sodium azide: a POISONOUS AND HAZARDOUS SUBSTANCE which should be handled by trained staff only.

Storage: -20 °C,-80 °C

Storage Comment: Upon receipt, store at -20°C or -80°C. Avoid repeated freeze.

Images



Western Blotting

Image 1. Western Blot analysis of CoLo cells using NSF Polyclonal Antibody