



Datasheet for ABIN7187573
anti-SLC25A21 antibody (Internal Region)



[Go to Product page](#)

1 Image

Overview

Quantity:	100 µg
Target:	SLC25A21 (Slc25a21)
Binding Specificity:	Internal Region
Reactivity:	Human
Host:	Rabbit
Clonality:	Polyclonal
Application:	Western Blotting (WB), ELISA, Immunohistochemistry (IHC)

Product Details

Immunogen:	Synthesized peptide derived from the Internal region of Human ODC.
Isotype:	IgG
Cross-Reactivity:	Human, Mouse, Rat
Purification:	The antibody was affinity-purified from rabbit antiserum by affinity-chromatography using epitope-specific immunogen.

Target Details

Target:	SLC25A21 (Slc25a21)
Alternative Name:	SLC25A21 (Slc25a21 Products)
Background:	Mitochondrial 2-oxodicarboxylate carrier antibody, ODC antibody, ODC_HUMAN antibody, ODC1 antibody, oxodicarboxylate carrier antibody, Slc25a21 antibody, Solute carrier family 25 (mitochondrial oxodicarboxylate carrier), member 21 antibody, Solute carrier family 25 member

Target Details

21 antibody

UniProt: [Q9BQT8](#)

Pathways: [SARS-CoV-2 Protein Interactome](#)

Application Details

Application Notes: WB:1:500-1:2000, IHC:1:100-1:300, ELISA:1:40000,

Restrictions: For Research Use only

Handling

Format: Liquid

Buffer: Liquid in PBS containing 50 % glycerol, 0.5 % BSA and 0.02 % sodium azide.

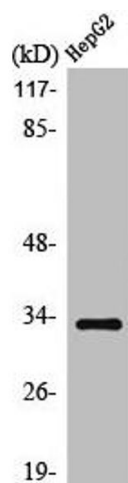
Preservative: Sodium azide

Precaution of Use: This product contains Sodium azide: a POISONOUS AND HAZARDOUS SUBSTANCE which should be handled by trained staff only.

Storage: -20 °C,-80 °C

Storage Comment: Upon receipt, store at -20°C or -80°C. Avoid repeated freeze.

Images



Western Blotting

Image 1. Western Blot analysis of HepG2 cells using ODC Polyclonal Antibody