



Datasheet for ABIN7187605  
**anti-OR2W3 antibody (Internal Region)**



[Go to Product page](#)

1 Image

Overview

Quantity:	100 µg
Target:	OR2W3
Binding Specificity:	Internal Region
Reactivity:	Human
Host:	Rabbit
Clonality:	Polyclonal
Conjugate:	This OR2W3 antibody is un-conjugated
Application:	Western Blotting (WB), ELISA

Product Details

Immunogen:	Synthesized peptide derived from the Internal region of Human Olfactory receptor 2W3.
Isotype:	IgG
Cross-Reactivity:	Human
Purification:	The antibody was affinity-purified from rabbit antiserum by affinity-chromatography using epitope-specific immunogen.

Target Details

Target:	OR2W3
Alternative Name:	OR2W3 ( <a href="#">OR2W3 Products</a> )
Background:	OR2W3 antibody, OR2W3P antibody, OR2W8P antibody, Olfactory receptor 2W3 antibody,

## Target Details

Olfactory receptor 2W8 antibody, Olfactory receptor OR1-49 antibody

UniProt: [Q7Z3T1](#)

## Application Details

Application Notes: WB:1:500-1:2000, ELISA:1:10000,

Restrictions: For Research Use only

## Handling

Format: Liquid

Buffer: Liquid in PBS containing 50 % glycerol, 0.5 % BSA and 0.02 % sodium azide.

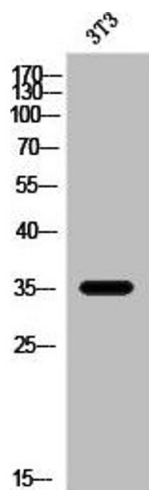
Preservative: Sodium azide

Precaution of Use: This product contains Sodium azide: a POISONOUS AND HAZARDOUS SUBSTANCE which should be handled by trained staff only.

Storage: -20 °C,-80 °C

Storage Comment: Upon receipt, store at -20°C or -80°C. Avoid repeated freeze.

## Images



### Western Blotting

**Image 1.** Western Blot analysis of 3T3 cells using Olfactory receptor 2W3 Polyclonal Antibody