



[Go to Product page](#)

Datasheet for ABIN7187670

anti-ORC1 antibody (Internal Region)

2 Images

Overview

Quantity:	100 µg
Target:	ORC1 (ORC1L)
Binding Specificity:	Internal Region
Reactivity:	Human
Host:	Rabbit
Clonality:	Polyclonal
Conjugate:	This ORC1 antibody is un-conjugated
Application:	Western Blotting (WB), ELISA

Product Details

Immunogen:	Synthesized peptide derived from the Internal region of Human ORC1.
Isotype:	IgG
Cross-Reactivity:	Human
Purification:	The antibody was affinity-purified from rabbit antiserum by affinity-chromatography using epitope-specific immunogen.

Target Details

Target:	ORC1 (ORC1L)
Alternative Name:	ORC1 (ORC1L Products)
Background:	HSORC1 antibody, MmORC1 antibody, orc1 antibody, ORC1_HUMAN antibody, ORC1L antibody,

Target Details

Origin Recognition Complex 1 antibody, Origin recognition complex subunit 1 (yeast homolog) like antibody, Origin recognition complex subunit 1 antibody, Origin recognition complex subunit 1 homolog antibody, Origin recognition complex subunit 1 like (S. cerevisia antibody, Origin recognition complex subunit 1 like antibody, Origin recognition complex subunit 1 S. cerevisiae homolog like antibody, Origin recognition complex, subunit 1 like (yeast) antibody, PARC1 antibody, Replication control protein 1 antibody

UniProt: [Q13415](#)

Pathways: [Mitotic G1-G1/S Phases](#), [DNA Replication](#), [Synthesis of DNA](#)

Application Details

Application Notes: WB:1:500-1:2000, ELISA:1:5000,

Restrictions: For Research Use only

Handling

Format: Liquid

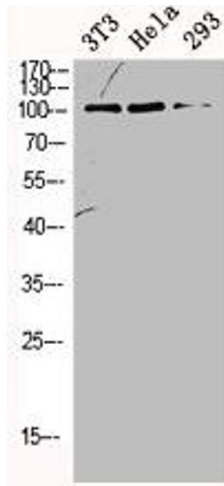
Buffer: Liquid in PBS containing 50 % glycerol, 0.5 % BSA and 0.02 % sodium azide.

Preservative: Sodium azide

Precaution of Use: This product contains Sodium azide: a POISONOUS AND HAZARDOUS SUBSTANCE which should be handled by trained staff only.

Storage: -20 °C,-80 °C

Storage Comment: Upon receipt, store at -20°C or -80°C. Avoid repeated freeze.



Western Blotting

Image 1. Western Blot analysis of NIH-3T3 HELA 293 cells using ORC1 Polyclonal Antibody



Western Blotting

Image 2. Western Blot analysis of 3T3 cells using ORC1 Polyclonal Antibody