



[Go to Product page](#)

Datasheet for ABIN7187730  
**anti-PDE4C antibody (Internal Region)**

1 Image

### Overview

Quantity:	100 µg
Target:	PDE4C
Binding Specificity:	Internal Region
Reactivity:	Human
Host:	Rabbit
Clonality:	Polyclonal
Conjugate:	This PDE4C antibody is un-conjugated
Application:	Western Blotting (WB), ELISA

### Product Details

Immunogen:	Synthesized peptide derived from the Internal region of Human PDE4C.
Isotype:	IgG
Cross-Reactivity:	Human, Mouse, Rat
Purification:	The antibody was affinity-purified from rabbit antiserum by affinity-chromatography using epitope-specific immunogen.

### Target Details

Target:	PDE4C
Alternative Name:	PDE4C ( <a href="#">PDE4C Products</a> )
Background:	5'-cyclic phosphodiesterase 4C antibody, cAMP specific 3' 5' cyclic phosphodiesterase 4C

## Target Details

---

antibody, cAMP-specific 3" antibody, DPDE 1 antibody, DPDE1 antibody, MGC126222 antibody, PDE 21 antibody, PDE 4C antibody, PDE21 antibody, Pde4c antibody, PDE4C\_HUMAN antibody, Phosphodiesterase 4C antibody, Phosphodiesterase 4C cAMP specific antibody, Phosphodiesterase 4C, cAMP specific (phosphodiesterase E1 dunce homolog, Drosophila) antibody, Phosphodiesterase E1 dunce homolog antibody, Phosphodiesterase E1 dunce homolog Drosophila antibody, Phosphodiesterase type 4C antibody

UniProt: [Q08493](#)

Pathways: [Negative Regulation of Hormone Secretion, cAMP Metabolic Process](#)

## Application Details

---

Application Notes: WB:1:500-1:2000, ELISA:1:5000,

Restrictions: For Research Use only

## Handling

---

Format: Liquid

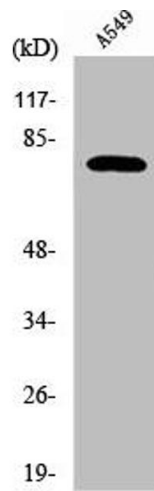
Buffer: Liquid in PBS containing 50 % glycerol, 0.5 % BSA and 0.02 % sodium azide.

Preservative: Sodium azide

Precaution of Use: This product contains Sodium azide: a POISONOUS AND HAZARDOUS SUBSTANCE which should be handled by trained staff only.

Storage: -20 °C,-80 °C

Storage Comment: Upon receipt, store at -20°C or -80°C. Avoid repeated freeze.



### Western Blotting

**Image 1.** Western Blot analysis of HuvEc cells using PDE4C Polyclonal Antibody