

Datasheet for ABIN7187737
anti-PDP2 antibody (Internal Region)[Go to Product page](#)

1 Image

Overview

Quantity:	100 µg
Target:	PDP2
Binding Specificity:	Internal Region
Reactivity:	Human
Host:	Rabbit
Clonality:	Polyclonal
Conjugate:	This PDP2 antibody is un-conjugated
Application:	ELISA, Western Blotting (WB)

Product Details

Immunogen:	Synthesized peptide derived from the Internal region of Human PDP2.
Isotype:	IgG
Cross-Reactivity:	Human
Purification:	The antibody was affinity-purified from rabbit antiserum by affinity-chromatography using epitope-specific immunogen.

Target Details

Target:	PDP2
Alternative Name:	PDP2 (PDP2 Products)
Background:	[Pyruvate dehydrogenase [acetyl-transferring]]-phosphatase 2 antibody, KIAA1348 antibody,

Target Details

mitochondrial antibody, PDP 2 antibody, Pdp2 antibody, PDP2_HUMAN antibody, PDPC 2 antibody, PPM2B antibody, PPM2C2 antibody, Protein phosphatase 2C magnesium dependent catalytic subunit 2 antibody, Protein phosphatase Mg2+/Mn2+ dependent 2B antibody, Pyruvate dehydrogenase phosphatase 2 antibody, Pyruvate dehydrogenase phosphatase catalytic subunit 2 antibody, pyruvate dehydrogenase phosphatase isoenzyme 2 antibody, Pyruvate dehydrogenase phosphatase, catalytic subunit 2 antibody

UniProt: [Q9P2J9](#)

Application Details

Application Notes: WB:1:500-1:2000, ELISA:1:20000,

Restrictions: For Research Use only

Handling

Format: Liquid

Buffer: Liquid in PBS containing 50 % glycerol, 0.5 % BSA and 0.02 % sodium azide.

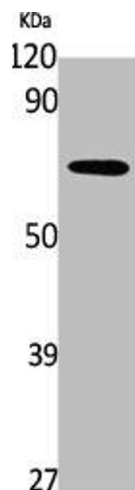
Preservative: Sodium azide

Precaution of Use: This product contains Sodium azide: a POISONOUS AND HAZARDOUS SUBSTANCE which should be handled by trained staff only.

Storage: -20 °C,-80 °C

Storage Comment: Upon receipt, store at -20°C or -80°C. Avoid repeated freeze.

Images



Western Blotting

Image 1. Western Blot analysis of K562 cells using PDP2 Polyclonal Antibody