



[Go to Product page](#)

Datasheet for ABIN7187757

anti-PGBD1 antibody (Internal Region)

1 Image

Overview

Quantity:	100 µg
Target:	PGBD1
Binding Specificity:	Internal Region
Reactivity:	Human
Host:	Rabbit
Clonality:	Polyclonal
Conjugate:	This PGBD1 antibody is un-conjugated
Application:	Western Blotting (WB), ELISA, Immunohistochemistry (IHC)

Product Details

Immunogen:	Synthesized peptide derived from the Internal region of Human PGBD1.
Isotype:	IgG
Cross-Reactivity:	Human
Purification:	The antibody was affinity-purified from rabbit antiserum by affinity-chromatography using epitope-specific immunogen.

Target Details

Target:	PGBD1
Alternative Name:	PGBD1 (PGBD1 Products)
Background:	Cerebral protein 4 antibody, dJ874C20.4 antibody, HUCEP 4 antibody, hucep-4 antibody, PGBD1

Target Details

antibody, PGBD1_HUMAN antibody, piggyBac transposable element derived 1 antibody, PiggyBac transposable element-derived protein 1 antibody, SCAND4 antibody

UniProt: [Q96JS3](#)

Application Details

Application Notes: WB:1:500-1:2000, IHC:1:100-1:300, ELISA:1:20000,

Restrictions: For Research Use only

Handling

Format: Liquid

Buffer: Liquid in PBS containing 50 % glycerol, 0.5 % BSA and 0.02 % sodium azide.

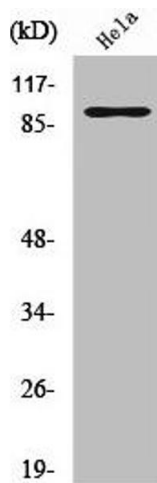
Preservative: Sodium azide

Precaution of Use: This product contains Sodium azide: a POISONOUS AND HAZARDOUS SUBSTANCE which should be handled by trained staff only.

Storage: -20 °C,-80 °C

Storage Comment: Upon receipt, store at -20°C or -80°C. Avoid repeated freeze.

Images



Western Blotting

Image 1. Western Blot analysis of HeLa cells using PGBD1 Polyclonal Antibody