



[Go to Product page](#)

Datasheet for ABIN7187817  
**anti-PPP1R14D antibody (Internal Region)**

1 Image

### Overview

|                      |  |
|----------------------|--|
| Quantity:            | 100 µg   |
| Target:              | PPP1R14D   |
| Binding Specificity: | Internal Region  |
| Reactivity:          | Human  |
| Host:                | Rabbit   |
| Clonality:           | Polyclonal   |
| Conjugate:           | This PPP1R14D antibody is un-conjugated                  |
| Application:         | Western Blotting (WB), ELISA, Immunohistochemistry (IHC) |

### Product Details

|                   |   |
|-------------------|---|
| Immunogen:        | Synthesized peptide derived from the Internal region of Human PPP1R14D.   |
| Isotype:          | IgG   |
| Cross-Reactivity: | Human   |
| Purification:     | The antibody was affinity-purified from rabbit antiserum by affinity-chromatography using epitope-specific immunogen. |

### Target Details

|                   |  |
|-------------------|--|
| Target:           | PPP1R14D   |
| Alternative Name: | PPP1R14D ( <a href="#">PPP1R14D Products</a> )   |
| Background:       | PPP1R14D antibody, GBPI antibody, Protein phosphatase 1 regulatory subunit 14D antibody, |

## Target Details

Gastrointestinal and brain-specific PP1-inhibitory protein 1 antibody, GBPI-1 antibody

UniProt: [Q9NXH3](#)

## Application Details

Application Notes: WB:1:500-1:2000, IHC:1:100-1:300, ELISA:1:5000,

Restrictions: For Research Use only

## Handling

Format: Liquid

Buffer: Liquid in PBS containing 50 % glycerol, 0.5 % BSA and 0.02 % sodium azide.

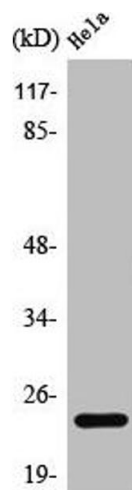
Preservative: Sodium azide

Precaution of Use: This product contains Sodium azide: a POISONOUS AND HAZARDOUS SUBSTANCE which should be handled by trained staff only.

Storage: -20 °C,-80 °C

Storage Comment: Upon receipt, store at -20°C or -80°C. Avoid repeated freeze.

## Images



### Western Blotting

**Image 1.** Western Blot analysis of COLO205 cells using PPP1R14D Polyclonal Antibody